

## Product datasheet for TP303703M

### LMBR1 (NM\_022458) Human Recombinant Protein

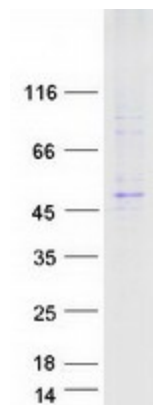
#### Product data:

|                                       |  |
|---------------------------------------|--|
| Product Type:                         | Recombinant Proteins   |
| Description:                          | Recombinant protein of human limb region 1 homolog (mouse) (LMBR1), 100 µg   |
| Species:                              | Human  |
| Expression Host:                      | HEK293T  |
| Expression cDNA Clone or AA Sequence: | >RC203703 protein sequence<br><span style="color: red;">Red</span> =Cloning site <span style="color: green;">Green</span> =Tags(s)<br><br>MEGQDEVSAREQHFHSQVRESTICFLLFAILYVVSFYIITRYKRKSDEQEDEDIVNRLSLFLSTFTLAV<br>SAGAVLLLPFSISNEILLSFPQNYIIQWLNGSLIHGLWNLASLFSNLCLFVLMPPFAFFLESEGFAGLK<br>KGIRARILETLVMLLLLALLILGIVWVASALIDNDAASMESLYDLWEFYLPYLYSCISLMGCLLLLLCTP<br>VGLSRMFTVMGQLLVKPTILEDLDEQIYIITLEEEALQRRNLGLSSSVVEYNIMELEQELENVKTCLKLE<br>RRKKASAWERNLVYPVAVMVLIIETISIVLLVACNILCLLVDETAMPKGTRGPGIGNASLSTFGFVGAAL<br>EIILIFYLMVSSVGVFYSRFFGNFTPKKDDTTMTKIIGNCVSILVLSSALPVMSTLGITRFDLLGDFG<br>RFNWLGNFYIVLSYNLLFAIVTTLCLVRKFTSAVREELFKALGLHLHLNPNTSRDSETAKPSVNGHQKAL<br><br><span style="color: red;">TR</span> <span style="color: green;">TRPLEQKLISEEDLAANDILDYKDDDDKV</span> |
| Tag:                                  | C-Myc/DDK  |
| Predicted MW:                         | 54.9 kDa   |
| Concentration:                        | >0.05 µg/µL as determined by microplate BCA method   |
| Purity:                               | > 80% as determined by SDS-PAGE and Coomassie blue staining  |
| Buffer:                               | 25 mM Tris-HCl, 100 mM glycine, pH 7.3, 10% glycerol   |
| Preparation:                          | Recombinant protein was captured through anti-DDK affinity column followed by conventional chromatography steps.   |
| Note:                                 | For testing in cell culture applications, please filter before use. Note that you may experience some loss of protein during the filtration process.   |
| Storage:                              | Store at -80°C.  |
| Stability:                            | Stable for 12 months from the date of receipt of the product under proper storage and handling conditions. Avoid repeated freeze-thaw cycles.  |
| RefSeq:                               | <u><a href="#">NP_071903</a></u>   |


[View online »](#)

|                   |   |
|-------------------|---|
| Locus ID:         | 64327   |
| UniProt ID:       | <a href="#">Q8WVP7</a>  |
| RefSeq Size:      | 4909  |
| Cytogenetics:     | 7q36.3  |
| RefSeq ORF:       | 1470  |
| Synonyms:         | ACHP; C7orf2; DIF14; LSS; PPD2; THYP; TPT; ZRS  |
| Summary:          | This gene encodes a member of the LMBR1-like membrane protein family. Another member of this protein family has been shown to be a lipocalin transmembrane receptor. A highly conserved, cis-acting regulatory module for the sonic hedgehog gene is located within an intron of this gene. Consequently, disruption of this genic region can alter sonic hedgehog expression and affect limb patterning, but it is not known if this gene functions directly in limb development. Mutations and chromosomal deletions and rearrangements in this genic region are associated with acheiropody and preaxial polydactyly, which likely result from altered sonic hedgehog expression. [provided by RefSeq, Jul 2008] |
| Protein Families: | Transmembrane   |

### Product images:



Coomassie blue staining of purified LMBR1 protein (Cat# [TP303703]). The protein was produced from HEK293T cells transfected with LMBR1 cDNA clone (Cat# [RC203703]) using MegaTran 2.0 (Cat# [TT210002]).