

## Product datasheet for TP303697L

### LRRC40 (NM\_017768) Human Recombinant Protein

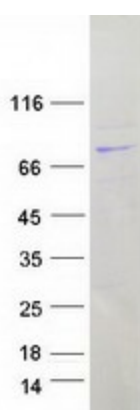
#### Product data:

Product Type:	Recombinant Proteins
Description:	Recombinant protein of human leucine rich repeat containing 40 (LRRC40), 1 mg
Species:	Human
Expression Host:	HEK293T
Expression cDNA Clone or AA Sequence:	>RC203697 protein sequence <b>Red</b> =Cloning site <b>Green</b> =Tags(s)
	MSRLKRIAGQDLRAGFKAGGRDCGTSVPQGLLKAARKSGQLNLSGRNLSEVPQCWWRINVDIPEEANQN L SFGATERWWEQTDLTCLIISNNKLQSLTDDLRLLPALTVLDIHDNQLTSLPSAIRELENLQKLNVSHNKL KILPEEITNLRNLKCLYLQHNELTCSIGFEQLSNLEDLDSNNHLTTPASFSSLSLVRNLNLSNELK SLPAEINRMKRLKHLDCNSNLETTIPPELAGMESLELLYLRRNKLRFLEFPSCSLLKELHVGENQIEML EAEHLKHLNSILVLDLRDNKLKSPDEIILLRSLERLDLSNNDISSLPYSLGNLHLKFLALEGNPLRTIR REIISKGTQEVLYLRSKIKDDGPSQSESATETAMTLPSESRVNIHAIITLKILDYSDKQATLIPDEVFD AVKSNIVTSINFSKNQLCEIPKRMVELKEMVSDVDLSFNKLSFISLELCVQLKLTFLDLRNNFLNLSLPEE MESLVRQLTINLSFNRFKMLPEVLYRIFTLETILISNNQVGSVDPQKMKMMENLTTLDLQNNDLLQIPPE LGNCVNLRTLLLDGNPFRVPRAAILMKGTAAILLEYLRDRIPT
	<b>TRTRPLEQKLISEEDLAANDILDYKDDDDKV</b>
Tag:	C-Myc/DDK
Predicted MW:	68.1 kDa
Concentration:	>0.05 µg/µL as determined by microplate BCA method
Purity:	> 80% as determined by SDS-PAGE and Coomassie blue staining
Buffer:	25 mM Tris-HCl, 100 mM glycine, pH 7.3, 10% glycerol
Preparation:	Recombinant protein was captured through anti-DDK affinity column followed by conventional chromatography steps.
Note:	For testing in cell culture applications, please filter before use. Note that you may experience some loss of protein during the filtration process.
Storage:	Store at -80°C.



[View online »](#)

Stability:	Stable for 12 months from the date of receipt of the product under proper storage and handling conditions. Avoid repeated freeze-thaw cycles.
RefSeq:	<a href="#">NP_060238</a>
Locus ID:	55631
UniProt ID:	<a href="#">Q9H9A6</a>
RefSeq Size:	2958
Cytogenetics:	1p31.1
RefSeq ORF:	1806
Synonyms:	dj677H15.1
Protein Families:	Druggable Genome

**Product images:**

Coomassie blue staining of purified LRRC40 protein (Cat# [TP303697]). The protein was produced from HEK293T cells transfected with LRRC40 cDNA clone (Cat# [RC203697]) using MegaTran 2.0 (Cat# [TT210002]).