

Product datasheet for **TP303683L**

FAM114A2 (NM_018691) Human Recombinant Protein

Product data:

Product Type:	Recombinant Proteins
Description:	Recombinant protein of human family with sequence similarity 114, member A2 (FAM114A2), 1 mg
Species:	Human
Expression Host:	HEK293T
Expression cDNA Clone or AA Sequence:	>RC203683 protein sequence Red =Cloning site Green =Tags(s)

MSDKDDIETPLLTEAAPILEDGNCEPAKNSSEVDQGAKPESKSEPVWSTRKRPETKPSSDLETSKVLPIQ
DNVSKDVPQTRWGYWGSWGSILSSASATVATVGQGISNVIEKAETSLGIPSPSEISTEVKYVAGETNAK
ENENSSPVAGAFGVFSTISTAVQSTGKSVISGGLDALEFIGKKTMDVIAEGDPGFKRTKGLMNRNATLSQ
VLREAKEKEEIRTSNEVTVETDKKTHYLLFDEFQGLSHLEALEMLSQESEIKVKSILNSLSGEELET
VELEQLKETFSLAEFCEEEEEKKGDEDFTKDITELFSQLHVSSKPEKLARARNTAHEWIRKSLTKPLAE
NEEGEKQSEAENTEQVNKNSIEDIHAFAIRSLAELTACSIELFHKTAALVLHGRKQEVTAIERSQTLTSM
TIVLCKELSSLSKEFTTCLTTAGVKEMADVLNPLITAVFLEASNSASYIQDAFQLLLPVLEISLIENKIE
SHRHELQGGKPLLEH

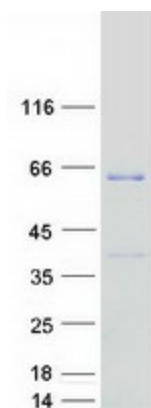
TRTRPLEQKLISEEDLAANDILDYKDDDDKV

Tag:	C-Myc/DDK
Predicted MW:	55.3 kDa
Concentration:	>0.05 µg/µL as determined by microplate BCA method
Purity:	> 80% as determined by SDS-PAGE and Coomassie blue staining
Buffer:	25 mM Tris-HCl, 100 mM glycine, pH 7.3, 10% glycerol
Preparation:	Recombinant protein was captured through anti-DDK affinity column followed by conventional chromatography steps.
Note:	For testing in cell culture applications, please filter before use. Note that you may experience some loss of protein during the filtration process.
Storage:	Store at -80°C.



[View online »](#)

Stability:	Stable for 12 months from the date of receipt of the product under proper storage and handling conditions. Avoid repeated freeze-thaw cycles.
RefSeq:	<u>NP_061161</u>
Locus ID:	10827
UniProt ID:	<u>Q9NRY5, I6L9D5, A0A140VKG4</u>
RefSeq Size:	2886
Cytogenetics:	5q33.2
RefSeq ORF:	1515
Synonyms:	133K02; C5orf3

Product images:

Coomassie blue staining of purified FAM114A2 protein (Cat# [TP303683]). The protein was produced from HEK293T cells transfected with FAM114A2 cDNA clone (Cat# [RC203683]) using MegaTran 2.0 (Cat# [TT210002]).