

Product datasheet for **TP303676**

FKBP10 (NM_021939) Human Recombinant Protein

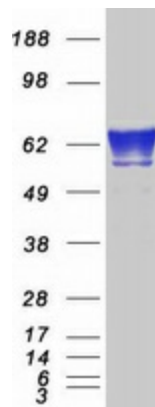
Product data:

Product Type:	Recombinant Proteins
Description:	Recombinant protein of human FK506 binding protein 10, 65 kDa (FKBP10), 20 µg
Species:	Human
Expression Host:	HEK293T
Expression cDNA Clone or AA Sequence:	>RC203676 protein sequence Red =Cloning site Green =Tags(s)
	<p>MFPAGPPSHSLLRPLQLLLLLLVQAVGRGLGRASPAGGPLEDVVIERYHIPRACPREVQMGMDFVRYHYN GTFEDGKKFDSSYDRNTLVAIVVGVGRLITGMDRGLMGMCVNERRRLIVPPHLGYGSIGLAGLIPPDATL YFDVLLDVWNKEDTVQVSTLLRPPHCPRMVQDGMDFVRYHYNGTLLDGTSTFDTSYSKGGTYDTYVSGWL IKGMDQGLLMCPGERRKIIIPFLAYGEKGYGTVIPQASLVFHVLLIDVHNPKDAVQLETLELPPGCV RRAGAGDFMRYHYNGSLMDGTLFDSSYSRNHTYNTYIGQGYIIPGMDQGLQGACMGERRRITIPPHLAYG ENGTGDKIPGSAVLIFNVHVIDFHNPAVVEIRTLSPSETCNETTKLGMDFVRYHYNCSLLDGTQLFTSH DYGAPQEATLGANKVIEGLDTGLQGMCVGERRQLIVPPHLAHGESGARGVPGSAVLLFEVELVSREDGLP TGYLFWHKDPPANLFEDMDLNKDGEPPEEFSTFIKAQVSEKGRMLPGQDPEKTIGDMFQNQDRNQDG KITVDELKLSDEDEERVHEEL</p> <p>TRTRPLEQKLISEEDLAANDILDYKDDDDKV</p>
Tag:	C-Myc/DDK
Predicted MW:	64.1 kDa
Concentration:	>0.05 µg/µL as determined by microplate BCA method
Purity:	> 80% as determined by SDS-PAGE and Coomassie blue staining
Buffer:	25 mM Tris-HCl, 100 mM glycine, pH 7.3, 10% glycerol
Preparation:	Recombinant protein was captured through anti-DDK affinity column followed by conventional chromatography steps.
Note:	For testing in cell culture applications, please filter before use. Note that you may experience some loss of protein during the filtration process.
Storage:	Store at -80°C.



[View online »](#)

Stability:	Stable for 12 months from the date of receipt of the product under proper storage and handling conditions. Avoid repeated freeze-thaw cycles.
RefSeq:	NP_068758
Locus ID:	60681
UniProt ID:	Q96AY3 , A0A024R1W3 , Q8NAG5 , Q658U4
RefSeq Size:	2888
Cytogenetics:	17q21.2
RefSeq ORF:	1746
Synonyms:	BRKS1; FKBP65; hFKBP65; OI6; OI11; PPIASE
Summary:	The protein encoded by this gene belongs to the FKBP-type peptidyl-prolyl cis/trans isomerase (PPIase) family. This protein localizes to the endoplasmic reticulum and acts as a molecular chaperone. Alternatively spliced variants encoding different isoforms have been reported, but their biological validity has not been determined.[provided by RefSeq, Nov 2009]
Protein Families:	Druggable Genome

Product images:

Coomassie blue staining of purified FKBP10 protein (Cat# TP303676). The protein was produced from HEK293T cells transfected with FKBP10 cDNA clone (Cat# [RC203676]) using MegaTran 2.0 (Cat# [TT210002]).