

Product datasheet for **TP303673M**

SPSB1 (NM_025106) Human Recombinant Protein

Product data:

Product Type:	Recombinant Proteins
Description:	Recombinant protein of human <i>splA</i> /ryanodine receptor domain and SOCS box containing 1 (SPSB1), 100 µg
Species:	Human
Expression Host:	HEK293T
Expression cDNA Clone or AA Sequence:	>RC203673 protein sequence Red =Cloning site Green =Tags(s)

MGQKVTGGIKTVDMRDPTYRPLKQELQGLDYCKPTRLDLLLDMPVSYDVQLLHSWNNDRSLNVFKED
DKLIFHRHPVAQSTDAIRGKVG YTRGLHVWQITWAMRQRGTHAVGVATADAPLHSVGYTTLVGNNHESW
GWDLGRNRLYHDGKNQPSKTYPAFLPEDEFIVPDSFLVALDMDGTLSEFIVDGGQYMGVAFRGLKGGKLY
PVSAVWGHCEIRMRYLNGLDPEPLPLMDLCRRSVRLALGRERLGEIHTLPLPASLKAYLLYQ

TRTRPLEQKLISEEDLAANDILDYKDDDDKV

Tag:	C-Myc/DDK
Predicted MW:	30.8 kDa
Concentration:	>0.05 µg/µL as determined by microplate BCA method
Purity:	> 80% as determined by SDS-PAGE and Coomassie blue staining
Buffer:	25 mM Tris-HCl, 100 mM glycine, pH 7.3, 10% glycerol
Preparation:	Recombinant protein was captured through anti-DDK affinity column followed by conventional chromatography steps.
Note:	For testing in cell culture applications, please filter before use. Note that you may experience some loss of protein during the filtration process.
Storage:	Store at -80°C.
Stability:	Stable for 12 months from the date of receipt of the product under proper storage and handling conditions. Avoid repeated freeze-thaw cycles.
RefSeq:	NP_079382
Locus ID:	80176



[View online »](#)

UniProt ID: [Q96BD6](#), [A0A024R4G8](#)

RefSeq Size: 3130

Cytogenetics: 1p36.22

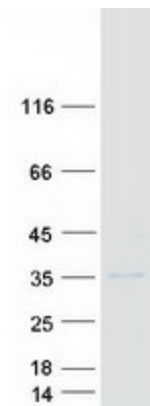
RefSeq ORF: 819

Synonyms: SSB-1; SSB1

Summary: Substrate recognition component of a SCF-like ECS (Elongin BC-CUL2/5-SOCS-box protein) E3 ubiquitin-protein ligase complex which mediates the ubiquitination and subsequent proteasomal degradation of target proteins (PubMed:15601820, PubMed:21199876). Negatively regulates nitric oxide (NO) production and limits cellular toxicity in activated macrophages by mediating the ubiquitination and proteasomal degradation of NOS2 (PubMed:21199876). Acts as a bridge which links NOS2 with the ECS E3 ubiquitin ligase complex components ELOC and CUL5 (PubMed:21199876).[UniProtKB/Swiss-Prot Function]

Protein Families: Druggable Genome

Product images:



Coomassie blue staining of purified SPSB1 protein (Cat# [TP303673]). The protein was produced from HEK293T cells transfected with SPSB1 cDNA clone (Cat# [RC203673]) using MegaTran 2.0 (Cat# [TT210002]).