

Product datasheet for TP303669

Creatine kinase B type (CKB) (NM_001823) Human Recombinant Protein

Product data:

Product Type: Recombinant Proteins

Description: Recombinant protein of human creatine kinase, brain (CKB), 20 µg

Species: Human

Expression Host: HEK293T

Expression cDNA Clone or AA Sequence: >RC203669 protein sequence
Red=Cloning site Green=Tags(s)

MPFSNSHNALKLRFPAEDEFDPDLAHNNHMAKVLTPELYAELRAKSTPSGFTLDDVIQTGVDNPGHPYIM
TVGCVAGDEESYEVFKDLFDPIIEDRHGGYKPSDEHKTDLNPDLQGGDDLDPNYVLSSRVRTGRSIRGF
CLPPHCSRGERRAIEKLAVEALSSLDGDLAGRYALKSMTEAEQQQLIDHFLDKPVSPLLASGMARD
WPDARGIWHNDNKTFLVWVNEEDHLRVISMQKGGNMKEVFTRFCTGLTQIETLFKSKDYEFMWNPHLGVI
LTCPSNLGTGLRAGVHIKLPNLGKHEKFSEVLKRLRLQKRGTGGVDAAVGGVFDVSNADRLGFSEVELV
QMVDGVKLLIEMEQRLEQGQAIDDLMPAQK

TRTRPLEQKLISEEDLAANDILDYKDDDDKV

Tag: C-Myc/DDK

Predicted MW: 42.5 kDa

Concentration: >0.05 µg/µL as determined by microplate BCA method

Purity: > 80% as determined by SDS-PAGE and Coomassie blue staining

Buffer: 25 mM Tris-HCl, 100 mM glycine, pH 7.3, 10% glycerol

Preparation: Recombinant protein was captured through anti-DDK affinity column followed by conventional chromatography steps.

Note: For testing in cell culture applications, please filter before use. Note that you may experience some loss of protein during the filtration process.

Storage: Store at -80°C.

Stability: Stable for 12 months from the date of receipt of the product under proper storage and handling conditions. Avoid repeated freeze-thaw cycles.

RefSeq: [NP_001814](#)

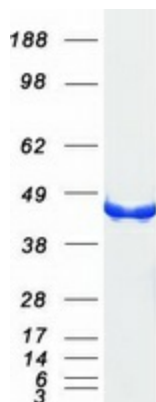
Locus ID: 1152



[View online »](#)

| | |
|-------------------|--|
| UniProt ID: | P12277 , V9HWH2 |
| RefSeq Size: | 1475 |
| Cytogenetics: | 14q32.33 |
| RefSeq ORF: | 1143 |
| Synonyms: | B-CK; BCK; CKBB; CPK-B; HEL-211; HEL-S-29 |
| Summary: | The protein encoded by this gene is a cytoplasmic enzyme involved in energy homeostasis. The encoded protein reversibly catalyzes the transfer of phosphate between ATP and various phosphogens such as creatine phosphate. It acts as a homodimer in brain as well as in other tissues, and as a heterodimer with a similar muscle isozyme in heart. The encoded protein is a member of the ATP:guanido phosphotransferase protein family. A pseudogene of this gene has been characterized. [provided by RefSeq, Jul 2008] |
| Protein Families: | Druggable Genome |
| Protein Pathways: | Arginine and proline metabolism, Metabolic pathways |

Product images:



Coomassie blue staining of purified CKB protein (Cat# TP303669). The protein was produced from HEK293T cells transfected with CKB cDNA clone (Cat# [RC203669]) using MegaTran 2.0 (Cat# [TT210002]).