

## Product datasheet for TP303667M

### Cirhin (UTP4) (NM\_032830) Human Recombinant Protein

#### Product data:

|                                       |  |
|---------------------------------------|--|
| Product Type:                         | Recombinant Proteins   |
| Description:                          | Recombinant protein of human cirrhosis, autosomal recessive 1A (cirhin) (CIRH1A), 100 µg |
| Species:                              | Human  |
| Expression Host:                      | HEK293T  |
| Expression cDNA Clone or AA Sequence: | >RC203667 protein sequence<br>Red=Cloning site Green=Tags(s)                             |

MGEFKVHRVRRFFNYVPSGIRCVAYNNQSNRLAVSRTDGTVEIYNLSANYFQEKFFPGHESRATEALCWAE  
GQRLFSAGLNGEIMEYDLQALNIKYAMDAFGGPIWSMAASPSGSQLLVGCEDGSVKLFQITPDKIQFERN  
FDRQKSRILSLSWHPSGTHIAAGSIDYISVFDVKSGSAVHKMIVDRQYMGVSKRKCIVWGVAF LSDGTII  
SVDSAGKVQFWDSATGTLVKSHLIANADVQSIADVADQEDSFVVGTAEGTVFHFQLVPVTSNSSEKQWVRT  
KPFQHHTHDVRTVAHSPTALISGGTDTHLVFRPLMEKVEVKNYDAALRKITFPHRCLISCSKRRQLLLFQ  
FAHHELELWRLGSTVATGKNGDTLPLSKNADHLLHLKTKGPENIICSCISPCGSWIAYSTVSRFFLYRLNY  
EHDNISLKRVS KMPAFLRSALQILFSEDSTKLFVASNQGALHIVQLSGGSFKHLHAFQPQSGTVEAMCLL  
AVSPDGNWLAASGTSAGVHVYVNVKQLKLHCTVPAYNFPVTAMAIAPNTNNLVIAHSDQQVFEYSIPDKQY  
TDWSRTVQKQGFHHLWLQRDTPITHISFHPKRP MHILLHDAYMFCIIDKSLPLPNDKTL LLYNPFPTNES  
DVIRRRTAHAFKISKIYKPLLFMDLLDERTLVAVERPLDDIIAQLPPPIK KKKKFGT

TRTRPLEQKLISEEDLAANDILDYKDDDDKV

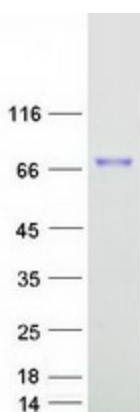
|                |  |
|----------------|--|
| Tag:           | C-Myc/DDK  |
| Predicted MW:  | 76.7 kDa   |
| Concentration: | >0.05 µg/µL as determined by microplate BCA method   |
| Purity:        | > 80% as determined by SDS-PAGE and Coomassie blue staining  |
| Buffer:        | 25 mM Tris-HCl, 100 mM glycine, pH 7.3, 10% glycerol   |
| Preparation:   | Recombinant protein was captured through anti-DDK affinity column followed by conventional chromatography steps.                                     |
| Note:          | For testing in cell culture applications, please filter before use. Note that you may experience some loss of protein during the filtration process. |
| Storage:       | Store at -80°C.  |



[View online »](#)

|                      |  |
|----------------------|--|
| <b>Stability:</b>    | Stable for 12 months from the date of receipt of the product under proper storage and handling conditions. Avoid repeated freeze-thaw cycles.  |
| <b>RefSeq:</b>       | <a href="#">NP_116219</a>  |
| <b>Locus ID:</b>     | 84916  |
| <b>UniProt ID:</b>   | <a href="#">Q969X6</a>   |
| <b>RefSeq Size:</b>  | 2268   |
| <b>Cytogenetics:</b> | 16q22.1  |
| <b>RefSeq ORF:</b>   | 2058   |
| <b>Synonyms:</b>     | CIRH1A; CIRHIN; NAIC; TEX292   |
| <b>Summary:</b>      | This gene encodes a WD40-repeat-containing protein that is localized to the nucleolus. Mutation of this gene causes North American Indian childhood cirrhosis, a severe intrahepatic cholestasis that results in transient neonatal jaundice, and progresses to periportal fibrosis and cirrhosis in childhood and adolescence. Alternative splicing results in multiple transcript variants. [provided by RefSeq, Jan 2016] |

### Product images:



Coomassie blue staining of purified UTP4 protein (Cat# [TP303667]). The protein was produced from HEK293T cells transfected with UTP4 cDNA clone (Cat# [RC203667]) using MegaTran 2.0 (Cat# [TT210002]).