

## Product datasheet for **TP303664**

### **C21orf70 (FAM207A) (NM\_058190) Human Recombinant Protein**

#### Product data:

Product Type:	Recombinant Proteins
Description:	Recombinant protein of human chromosome 21 open reading frame 70 (C21orf70), 20 µg
Species:	Human
Expression Host:	HEK293T
Expression cDNA Clone or AA Sequence:	>RC203664 protein sequence <b>Red</b> =Cloning site <b>Green</b> =Tags(s)
	MGKVRGLRARVHQA A V R P K G E A A P G P A P P A P E A T P P P A S A A G K D W A F I N T N I F A R T K I D P S A L V Q K L E L D V R S V T S V R R G E A G S S A R S V P S I R R G A E A K T V L P K K E K M K L R R E Q W L Q K I E A I K L A E Q K H R E E R R R R A T V V V G D L H P L R D A L P E L L G L E A G S R R Q A R S R E S N K P R P S E L S R M S A A Q R Q Q L L E E E R T R F Q E L L A S P A Y R A S P L V A I G Q T L A R Q M Q L E D G G Q L
	<b>TR</b> TRPLEQKLISEEDLAANDILDYKDDDDKV
Tag:	C-Myc/DDK
Predicted MW:	25.3 kDa
Concentration:	>0.05 µg/µL as determined by microplate BCA method
Purity:	> 80% as determined by SDS-PAGE and Coomassie blue staining
Buffer:	25 mM Tris-HCl, 100 mM glycine, pH 7.3, 10% glycerol
Preparation:	Recombinant protein was captured through anti-DDK affinity column followed by conventional chromatography steps.
Note:	For testing in cell culture applications, please filter before use. Note that you may experience some loss of protein during the filtration process.
Storage:	Store at -80°C.
Stability:	Stable for 12 months from the date of receipt of the product under proper storage and handling conditions. Avoid repeated freeze-thaw cycles.
RefSeq:	<u><a href="#">NP_478070</a></u>
Locus ID:	85395
UniProt ID:	<u><a href="#">Q9NSI2</a></u>



[View online »](#)

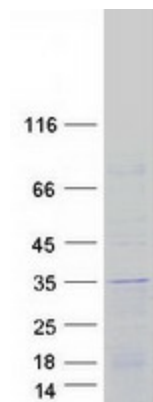
RefSeq Size: 964

Cytogenetics: 21q22.3

RefSeq ORF: 690

Synonyms: C21orf70; PRED56

### Product images:



Coomassie blue staining of purified FAM207A protein (Cat# TP303664). The protein was produced from HEK293T cells transfected with FAM207A cDNA clone (Cat# [RC203664]) using MegaTran 2.0 (Cat# [TT210002]).