

Product datasheet for **TP303655L**

ACTC1 (NM_005159) Human Recombinant Protein

Product data:

Product Type: Recombinant Proteins

Description: Recombinant protein of human actin, alpha, cardiac muscle 1 (ACTC1), 1 mg

Species: Human

Expression Host: HEK293T

Expression cDNA Clone or AA Sequence: >RC203655 protein sequence
Red=Cloning site **Green**=Tags(s)

MCDDEETTALVCDNGSGLVKAGFAGDDAPRAVFPISIVGRPRHQGVMVGMGQKDSYVGDEAQS~~KR~~GILTLK
YPIEHGIITNWDDMEKIWHHTFYNELRVAP~~EE~~HPTLLTEAPLNPKANREKMTQIMFETFNVPAMYVAIQA
VLSLYASGR~~TT~~GIVLDSGDGVTHNVPIYEGYALPHAIMRLDLAGRDLTDYLMKILTERGYSFVTTAEREI
VRDIKEKLCYVALDFENEMATAASSSSLEKSYELPDGQVITIGNERFRCPETL~~FQ~~PSFIGMESAGIHETT
YNSIMKCDIDIRKDYANNVLSGGT~~TM~~YPGIADRMQKEITALAPSTMKIKI~~I~~APPERKYSVWIGGSILAS
LSTFQQMWISKQEYDEAGPSIVHRKCF

TRTRPLEQKLISEEDLAANDILDYKDDDDKV

Tag: C-Myc/DDK

Predicted MW: 41.8 kDa

Concentration: >0.05 µg/µL as determined by microplate BCA method

Purity: > 80% as determined by SDS-PAGE and Coomassie blue staining

Buffer: 25 mM Tris-HCl, 100 mM glycine, pH 7.3, 10% glycerol

Preparation: Recombinant protein was captured through anti-DDK affinity column followed by conventional chromatography steps.

Note: For testing in cell culture applications, please filter before use. Note that you may experience some loss of protein during the filtration process.

Storage: Store at -80°C.

Stability: Stable for 12 months from the date of receipt of the product under proper storage and handling conditions. Avoid repeated freeze-thaw cycles.

RefSeq: [NP_005150](#)

Locus ID: 70



[View online »](#)

UniProt ID: [P68032](#), [B3KPP5](#)

RefSeq Size: 3693

Cytogenetics: 15q14

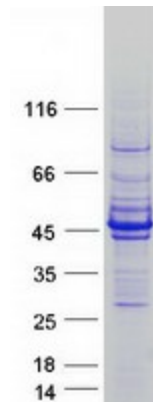
RefSeq ORF: 1131

Synonyms: ACTC; ASD5; CMD1R; CMH11; LVNC4

Summary: Actins are highly conserved proteins that are involved in various types of cell motility. Polymerization of globular actin (G-actin) leads to a structural filament (F-actin) in the form of a two-stranded helix. Each actin can bind to four others. The protein encoded by this gene belongs to the actin family which is comprised of three main groups of actin isoforms, alpha, beta, and gamma. The alpha actins are found in muscle tissues and are a major constituent of the contractile apparatus. Defects in this gene have been associated with idiopathic dilated cardiomyopathy (IDC) and familial hypertrophic cardiomyopathy (FHC). [provided by RefSeq, Jul 2008]

Protein Pathways: Cardiac muscle contraction, Dilated cardiomyopathy, Hypertrophic cardiomyopathy (HCM)

Product images:



Coomassie blue staining of purified ACTC1 protein (Cat# [TP303655]). The protein was produced from HEK293T cells transfected with ACTC1 cDNA clone (Cat# [RC203655]) using MegaTran 2.0 (Cat# [TT210002]).