

## Product datasheet for TP303655

### ACTC1 (NM\_005159) Human Recombinant Protein

#### Product data:

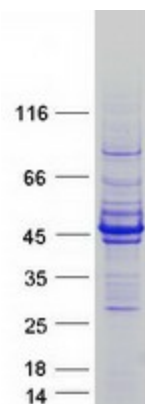
Product Type:	Recombinant Proteins
Description:	Recombinant protein of human actin, alpha, cardiac muscle 1 (ACTC1)
Species:	Human
Expression Host:	HEK293T
Tag:	C-Myc/DDK
Predicted MW:	41.8 kDa
Concentration:	>50 ug/mL as determined by microplate BCA method
Purity:	> 80% as determined by SDS-PAGE and Coomassie blue staining
Buffer:	25 mM Tris.HCl, pH 7.3, 100 mM glycine, 10% glycerol
Preparation:	Recombinant protein was captured through anti-DDK affinity column followed by conventional chromatography steps.
Storage:	Store at -80°C.
Stability:	Stable for 12 months from the date of receipt of the product under proper storage and handling conditions. Avoid repeated freeze-thaw cycles.
RefSeq:	<a href="#">NP_005150</a>
Locus ID:	70
RefSeq Size:	3693
Cytogenetics:	15q14
RefSeq ORF:	1131
Synonyms:	ACTC; ASD5; CMD1R; CMH11; LVNC4
Summary:	Actins are highly conserved proteins that are involved in various types of cell motility. Polymerization of globular actin (G-actin) leads to a structural filament (F-actin) in the form of a two-stranded helix. Each actin can bind to four others. The protein encoded by this gene belongs to the actin family which is comprised of three main groups of actin isoforms, alpha, beta, and gamma. The alpha actins are found in muscle tissues and are a major constituent of the contractile apparatus. Defects in this gene have been associated with idiopathic dilated cardiomyopathy (IDC) and familial hypertrophic cardiomyopathy (FHC). [provided by RefSeq, Jul 2008]



[View online »](#)

Protein Pathways: Cardiac muscle contraction, Dilated cardiomyopathy, Hypertrophic cardiomyopathy (HCM)

### Product images:



Coomassie blue staining of purified ACTC1 protein (Cat# TP303655). The protein was produced from HEK293T cells transfected with ACTC1 cDNA clone (Cat# [RC203655]) using MegaTran 2.0 (Cat# [TT210002]).