

Product datasheet for **TP303643M**

beta Actin (ACTB) (NM_001101) Human Recombinant Protein

Product data:

Product Type:	Recombinant Proteins
Description:	Recombinant protein of human actin, beta (ACTB), 100 µg
Species:	Human
Expression Host:	HEK293T
Expression cDNA	>RC203643 representing NM_001101
Clone or AA Sequence:	Red=Cloning site Green=Tags(s)

MDDDIAALVDNGSGMCKAGFAGDDAPRAVFPVGRPRHQGVMVGMGQKDSYVGDEAQSQRGILTLKYP
IEHGIVTNWDDMEKIWHHTFYNELRVAPPEHPVLLTEAPLNPKANREKMTQIMFETFNTPAMYVAIQAVL
SLYASGRRTTGIVMDSGDGVHTVPIYEGYALPHAILRLDLAGRDLTDYLMKILTERGYSFTTTAEREIVR
DIKEKLCYVALDFEQEMATAASSSSLEKSYELPDGQVITIGNERFRCPEALFQPSFLGMESCGIHETTFN
SIMKCDVDIRKDLYANTVLSGGTTMYPGIADRMQKEITALAPSTMKIKIAPPKYSVWIGGSILASLS
TFQQMWISKQEYDESGPSIVHRKCF

TRTRPLEQKLISEEDLAANDILDYKDDDDKV

Tag:	C-Myc/DDK
Predicted MW:	41.6 kDa
Concentration:	>0.1 µg/µL as determined by microplate BCA method
Purity:	> 80% as determined by SDS-PAGE and Coomassie blue staining
Buffer:	25 mM Tris-HCl, 100 mM glycine, pH 7.3, 10% glycerol
Preparation:	Recombinant protein was captured through anti-DDK affinity column followed by conventional chromatography steps.
Note:	For testing in cell culture applications, please filter before use. Note that you may experience some loss of protein during the filtration process.
Storage:	Store at -80°C.
Stability:	Stable for 12 months from the date of receipt of the product under proper storage and handling conditions. Avoid repeated freeze-thaw cycles.
RefSeq:	NP_001092
Locus ID:	60



[View online »](#)

UniProt ID: [P60709](#), [Q1KLZ0](#)

RefSeq Size: 1793

Cytogenetics: 7p22.1

RefSeq ORF: 1125

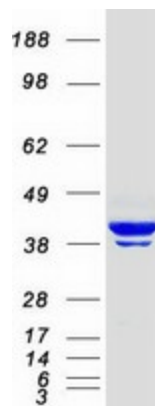
Synonyms: BRWS1; PS1TP5BP1

Summary: This gene encodes one of six different actin proteins. Actins are highly conserved proteins that are involved in cell motility, structure, integrity, and intercellular signaling. The encoded protein is a major constituent of the contractile apparatus and one of the two nonmuscle cytoskeletal actins that are ubiquitously expressed. Mutations in this gene cause Baraitser-Winter syndrome 1, which is characterized by intellectual disability with a distinctive facial appearance in human patients. Numerous pseudogenes of this gene have been identified throughout the human genome. [provided by RefSeq, Aug 2017]

Protein Families: ES Cell Differentiation/IPS

Protein Pathways: Adherens junction, Arrhythmogenic right ventricular cardiomyopathy (ARVC), Dilated cardiomyopathy, Focal adhesion, Hypertrophic cardiomyopathy (HCM), Leukocyte transendothelial migration, Pathogenic Escherichia coli infection, Regulation of actin cytoskeleton, Tight junction, Vibrio cholerae infection, Viral myocarditis

Product images:



Coomassie blue staining of purified ACTB protein (Cat# [TP303643]). The protein was produced from HEK293T cells transfected with ACTB cDNA clone (Cat# [RC203643]) using MegaTran 2.0 (Cat# [TT210002]).