

## Product datasheet for **TP303631**

### CCDC28B (NM\_024296) Human Recombinant Protein

#### Product data:

Product Type:	Recombinant Proteins
Description:	Recombinant protein of human coiled-coil domain containing 28B (CCDC28B), 20 µg
Species:	Human
Expression Host:	HEK293T
Expression cDNA Clone or AA Sequence:	>RC203631 protein sequence <b>Red</b> =Cloning site <b>Green</b> =Tags(s)
	MDDKKKKRSPKPCLAQPAQAPGTLRRVPVPTSHSGSLALGLPHLPSPKQRAKFKRVGKEKCRPVLGGGS GSAGTPLQHSFLTVDVYEMEGLLNLLNDFHSGRLQAFGKECSFEQLEHVREMQEKLARLHFSLDVCG EEEDDEEEEDGVTEGLPEEQKKTMAADRNLQLLSNLEDLSNSIQKLHLAENAEPEEQSAA
	<b>TRTRPLEQKLISEEDLAANDILDYKDDDDKV</b>
Tag:	C-Myc/DDK
Predicted MW:	21.9 kDa
Concentration:	>0.05 µg/µL as determined by microplate BCA method
Purity:	> 80% as determined by SDS-PAGE and Coomassie blue staining
Buffer:	25 mM Tris-HCl, 100 mM glycine, pH 7.3, 10% glycerol
Preparation:	Recombinant protein was captured through anti-DDK affinity column followed by conventional chromatography steps.
Note:	For testing in cell culture applications, please filter before use. Note that you may experience some loss of protein during the filtration process.
Storage:	Store at -80°C.
Stability:	Stable for 12 months from the date of receipt of the product under proper storage and handling conditions. Avoid repeated freeze-thaw cycles.
RefSeq:	<u><a href="#">NP_077272</a></u>
Locus ID:	79140
UniProt ID:	<u><a href="#">Q9BUN5</a></u>
RefSeq Size:	1110



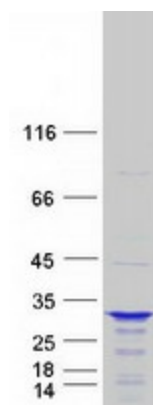
[View online »](#)

**Cytogenetics:** 1p35.2

**RefSeq ORF:** 600

**Summary:** The product of this gene localizes to centrosomes and basal bodies. The protein colocalizes with several proteins associated with Bardet-Biedl syndrome (BBS) and participates in the regulation of cilia development. Alternative splicing results in multiple transcript variants. [provided by RefSeq, Jul 2014]

### Product images:



Coomassie blue staining of purified CCDC28B protein (Cat# TP303631). The protein was produced from HEK293T cells transfected with CCDC28B cDNA clone (Cat# [RC203631]) using MegaTran 2.0 (Cat# [TT210002]).