

## Product datasheet for **TP303629M**

### beta V Tubulin (TUBB) (NM\_178014) Human Recombinant Protein

#### Product data:

**Product Type:** Recombinant Proteins

**Description:** Recombinant protein of human tubulin, beta (TUBB), 100 µg

**Species:** Human

**Expression Host:** HEK293T

**Expression cDNA** >RC203629 protein sequence

**Clone or AA** Red=Cloning site Green=Tags(s)

**Sequence:**

MREIVHIQAGQCGNQIGAKFWEVISDEHGIDPTGTYHGSDQLDRISVYNEATGGKYVPRAILVDLEP  
GTMDSVRSGPFGQIFRPDNFVFGQSGAGNNWAKGHYTEGAELVDSVLDVVRKEAESDCDCLQGFQLTHSLG  
GGTGSGMGTLLISKIREEYPDRIMNTFSVSPKVS DTVVEPYNATLSVHQLVENTDETYCIDNEALYDI  
CFRTLKLTPTYGDLNHLVSATMSGVTTCLRFPGQLNADLRKLVANMVPFRLHFFMPGFAPLTSRGSQQ  
YRALVPELTQQVFDANKMMAACDPRHGRYLTVAAVFRGRMSMKEVDEQMLNVQKNKSSYFVEWIPNNVK  
TAVCDIPPRGLKMAVTFIGNSTAIQELFKRISEQFTAMFRRKAFLHWYTGEGMDEMEFTEAESNMNDLVS  
EYQQYQDATAEEEEEDFGEEAEEEE

TRTRPLEQKLISEEDLAANDILDYKDDDDKV

**Tag:** C-Myc/DDK

**Predicted MW:** 49.5 kDa

**Concentration:** >0.05 µg/µL as determined by microplate BCA method

**Purity:** > 80% as determined by SDS-PAGE and Coomassie blue staining

**Buffer:** 25 mM Tris-HCl, 100 mM glycine, pH 7.3, 10% glycerol

**Preparation:** Recombinant protein was captured through anti-DDK affinity column followed by conventional chromatography steps.

**Note:** For testing in cell culture applications, please filter before use. Note that you may experience some loss of protein during the filtration process.

**Storage:** Store at -80°C.

**Stability:** Stable for 12 months from the date of receipt of the product under proper storage and handling conditions. Avoid repeated freeze-thaw cycles.

**RefSeq:** [NP\\_821133](#)



[View online »](#)

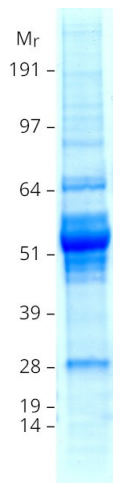
Locus ID: 203068  
UniProt ID: [P07437](#), [Q5SU16](#)  
RefSeq Size: 2688  
Cytogenetics: 6p21.33  
RefSeq ORF: 1332  
Synonyms: CDCBM6; CSCSC1; M40; OK/SW-cl.56; TUBB1; TUBB5

**Summary:** This gene encodes a beta tubulin protein. This protein forms a dimer with alpha tubulin and acts as a structural component of microtubules. Mutations in this gene cause cortical dysplasia, complex, with other brain malformations 6. Alternative splicing results in multiple splice variants. There are multiple pseudogenes for this gene on chromosomes 1, 6, 7, 8, 9, and 13. [provided by RefSeq, Jun 2014]

**Protein Families:** Druggable Genome

**Protein Pathways:** Gap junction, Pathogenic Escherichia coli infection

### Product images:



Coomassie blue staining of purified TUBB protein (Cat# [TP303629]). The protein was produced from HEK293T cells transfected with TUBB cDNA clone (Cat# [RC203629]) using MegaTran 2.0 (Cat# [TT210002]).