

## Product datasheet for **TP303618L**

### FEM 1B (FEM1B) (NM\_015322) Human Recombinant Protein

#### Product data:

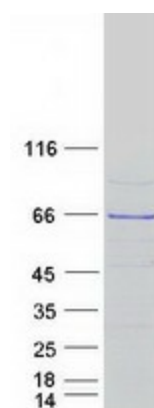
Product Type:	Recombinant Proteins
Description:	Recombinant protein of human fem-1 homolog b (C. elegans) (FEM1B), 1 mg
Species:	Human
Expression Host:	HEK293T
Expression cDNA Clone or AA Sequence:	>RC203618 protein sequence <b>Red</b> =Cloning site <b>Green</b> =Tags(s)
	MEGLAGYVYKAASEGKVLTLAALLLNRSSEDIRYLLGYVSQQGGQRSTPLIIAARNGHAKVVRLLLEHYR VQTQQTGTVRFDGYVIDGATALWCAAGAGHFEVVKLLVSHGANVNHTTVTNSTPLRAACFDGRLDIVKYL VENNANISIANKYDNTCLMIAAYKGHTDVVRYLLEQRADPNAKAHCGATALHFAAEAGHIDIVKELIKWR AAIVNGHGMTPLKVAAESCKADVVELLLSHADCDRRSRIEALLGASFANDRENYDIKTYHYLYLAM LERFQDGDNILEKEVLPIHAYGNRTECRNPQELESIRQDRDALHMEGLIVRERILGADNIDVSHPIIYR GAVYADNMEFEQCIKLWLHALHLRQKGNRNTHKDLLRFAQVFSQMIHLNETVKAPDIECVLRCSVLEIEQ SMNRVKNISDADVHNAMDNYECNLTYFLYLVCISTKTQCSEEDQCKINKQIYNLIHLDPRTREGFTLLHL AVNSNTPVDDFHTNDVCSFPNALVTKLLDCGAEVNAVDNEGNSALHIIVQYNRPISDFLTLSIIISLV EAGAHTDMTNKQNKTPLDKSTTGVS EILLKTQMMSLKCLAARAVRANDINYQDQIPRTLEEFVGFH
	<b>TRTRPLEQKLISEEDLAANDILDYKDDDDKV</b>
Tag:	C-Myc/DDK
Predicted MW:	70.1 kDa
Concentration:	>0.05 µg/µL as determined by microplate BCA method
Purity:	> 80% as determined by SDS-PAGE and Coomassie blue staining
Buffer:	25 mM Tris-HCl, 100 mM glycine, pH 7.3, 10% glycerol
Preparation:	Recombinant protein was captured through anti-DDK affinity column followed by conventional chromatography steps.
Note:	For testing in cell culture applications, please filter before use. Note that you may experience some loss of protein during the filtration process.
Storage:	Store at -80°C.



[View online »](#)

<b>Stability:</b>	Stable for 12 months from the date of receipt of the product under proper storage and handling conditions. Avoid repeated freeze-thaw cycles.
<b>RefSeq:</b>	<a href="#">NP_056137</a>
<b>Locus ID:</b>	10116
<b>UniProt ID:</b>	<a href="#">Q9UK73</a>
<b>RefSeq Size:</b>	7132
<b>Cytogenetics:</b>	15q23
<b>RefSeq ORF:</b>	1881
<b>Synonyms:</b>	F1A-ALPHA; F1AA; FEM1-beta
<b>Summary:</b>	This gene encodes an ankyrin repeat protein that belongs to the death receptor-associated family of proteins and plays a role in mediating apoptosis. The encoded protein is also thought to function in the replication stress-induced checkpoint signaling pathway via interaction with checkpoint kinase 1. [provided by RefSeq, Aug 2013]
<b>Protein Families:</b>	Druggable Genome

### Product images:



Coomassie blue staining of purified FEM1B protein (Cat# [TP303618]). The protein was produced from HEK293T cells transfected with FEM1B cDNA clone (Cat# [RC203618]) using MegaTran 2.0 (Cat# [TT210002]).