

Product datasheet for TP303617L

LRRC46 (NM_033413) Human Recombinant Protein

Product data:

Product Type:	Recombinant Proteins
Description:	Recombinant protein of human leucine rich repeat containing 46 (LRRC46), 1 mg
Species:	Human
Expression Host:	HEK293T
Expression cDNA Clone or AA Sequence:	>RC203617 protein sequence Red=Cloning site Green=Tags(s)

MSGGKSAQGP EEGVCITEALITKRNLTFPEDGELSEKMFHTLDELQTVRLDREGITTIRNLEGLQNLHS
LYLQGNKIQIENLACIPSLRFLSLAGNQIRQVENLLDLPCLQFLDLSENLIETLKLDFPQSLILNLS
GNSCTNQDGYRELVTEALPLLLDLGQPVVERWISDEEDEASSDEEFPELSPFCSERGFLKELEQELSR
HREHRQQTALTEHLLRMEMQPTLTDLPLPGVPMAGDSSPSATPAQGEETVPEAVSSPQASSPTKKPCSL
IPRGHQSSFWGRKGARAATAPKASVAEAPSTTKTTAKRSKK

TRTRPLEQKLISEEDLAANDILDYKDDDDKV

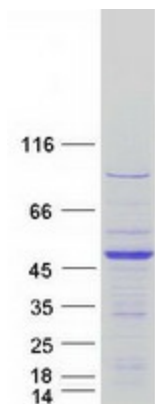
Tag:	C-Myc/DDK
Predicted MW:	35.2 kDa
Concentration:	>0.05 µg/µL as determined by microplate BCA method
Purity:	> 80% as determined by SDS-PAGE and Coomassie blue staining
Buffer:	25 mM Tris-HCl, 100 mM glycine, pH 7.3, 10% glycerol
Preparation:	Recombinant protein was captured through anti-DDK affinity column followed by conventional chromatography steps.
Note:	For testing in cell culture applications, please filter before use. Note that you may experience some loss of protein during the filtration process.
Storage:	Store at -80°C.
Stability:	Stable for 12 months from the date of receipt of the product under proper storage and handling conditions. Avoid repeated freeze-thaw cycles.
RefSeq:	<u>NP_219481</u>
Locus ID:	90506



[View online »](#)

UniProt ID: [Q96FV0](#)
RefSeq Size: 1938
Cytogenetics: 17q21.32
RefSeq ORF: 963

Product images:



Coomassie blue staining of purified LRRC46 protein (Cat# [TP303617]). The protein was produced from HEK293T cells transfected with LRRC46 cDNA clone (Cat# [RC203617]) using MegaTran 2.0 (Cat# [TT210002]).