

Product datasheet for TP303612M

ERGIC1 (NM_001031711) Human Recombinant Protein

Product data:

Product Type:	Recombinant Proteins
Description:	Recombinant protein of human endoplasmic reticulum-golgi intermediate compartment (ERGIC) 1 (ERGIC1), 100 µg
Species:	Human
Expression Host:	HEK293T
Expression cDNA Clone or AA Sequence:	>RC203612 protein sequence Red=Cloning site Green=Tags(s)

MPFDFFRRFDIYRKVPKDLTQPTYTGAIISICCLFILFLSELTGFITTEVWVELYVDDPKDSSGGKID
VSLNLSLPNLHCELVGLDIQDEMGRHEVGHIDNSMKIPLNNGAGCRFEGQFSINKVPGNFHVSTHSATAQ
PQNPDMTHVIHKLSFGDTLQVQNIHGAFNALGGADRLTSNPLASHDYILKIVPTVYEDKSGKQRYSYQYT
VANKEYVAYSHTGRIIPAIWFRYDLSPITVKYTERRQPLYRFITTICAIIGGTFTVAGILDSCIFTASEA
WKKIQLGKMH

TRTRPLEQKLISEEDLAANDILDYKDDDDKV

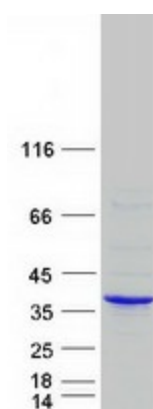
Tag:	C-Myc/DDK
Predicted MW:	32.4 kDa
Concentration:	>0.05 µg/µL as determined by microplate BCA method
Purity:	> 80% as determined by SDS-PAGE and Coomassie blue staining
Buffer:	25 mM Tris-HCl, 100 mM glycine, pH 7.3, 10% glycerol
Preparation:	Recombinant protein was captured through anti-DDK affinity column followed by conventional chromatography steps.
Note:	For testing in cell culture applications, please filter before use. Note that you may experience some loss of protein during the filtration process.
Storage:	Store at -80°C.
Stability:	Stable for 12 months from the date of receipt of the product under proper storage and handling conditions. Avoid repeated freeze-thaw cycles.
RefSeq:	NP_001026881
Locus ID:	57222



[View online »](#)

UniProt ID:	Q969X5
RefSeq Size:	2949
Cytogenetics:	5q35.1
RefSeq ORF:	870
Synonyms:	AMC2; AMCN; ERGIC-32; ERGIC32; NET24
Summary:	This gene encodes a cycling membrane protein which is an endoplasmic reticulum-golgi intermediate compartment (ERGIC) protein which interacts with other members of this protein family to increase their turnover. [provided by RefSeq, Jul 2008]
Protein Families:	Transmembrane

Product images:



Coomassie blue staining of purified ERGIC1 protein (Cat# [TP303612]). The protein was produced from HEK293T cells transfected with ERGIC1 cDNA clone (Cat# [RC203612]) using MegaTran 2.0 (Cat# [TT210002]).