

## Product datasheet for **TP303601L**

### **BCKDH kinase (BCKDK) (NM\_005881) Human Recombinant Protein**

#### Product data:

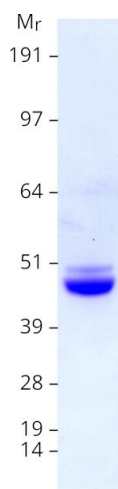
Product Type:	Recombinant Proteins
Description:	Recombinant protein of human branched chain ketoacid dehydrogenase kinase (BCKDK), nuclear gene encoding mitochondrial protein, transcript variant 1, 1 mg
Species:	Human
Expression Host:	HEK293T
Expression cDNA Clone or AA Sequence:	>RC203601 protein sequence <b>Red</b> =Cloning site <b>Green</b> =Tags(s)
	<p>MILASVLRSGPGGGLPLRPLLGPALALRARSTSATDTHHVEMARERSKTVTSTFYNQSAIDAAAEEKPSVRL TPTMMLYAGRSQDGSHELLKSARYLQQELPVRIAHRIKGFRCPLFIIGCNPTILHVHELYIRAFQKLTDFP PIKDQADEAQYQQLVLRQLDDHKDVVTLAEGLRSRKHIEDEKLVRYFLDKTLTSRLGIRMLATHHLAL HEDKPDFVGIICTRLSPKKIIEKWVDFARRLCEHKYGNAPRVRINGHVAARFPFIPMPLDYILPELLKNA MRATMESHLDTPYNVPDVTIANNDVDLIIRISDRGGGIAHKDLDRVMDYHFTTAEASTQDPRISPLFG HLDMHSGAQSGPMHGFGLPTSRAYAEYLGGSLLQLSLQGIGTDVYLRRLRHIDGREESFRI</p> <p><b>TRTRPLEQKLISEEDLAANDILDYKDDDDKV</b></p>
Tag:	C-Myc/DDK
Predicted MW:	46.2 kDa
Concentration:	>0.05 µg/µL as determined by microplate BCA method
Purity:	> 80% as determined by SDS-PAGE and Coomassie blue staining
Buffer:	25 mM Tris-HCl, 100 mM glycine, pH 7.3, 10% glycerol
Preparation:	Recombinant protein was captured through anti-DDK affinity column followed by conventional chromatography steps.
Note:	For testing in cell culture applications, please filter before use. Note that you may experience some loss of protein during the filtration process.
Storage:	Store at -80°C.
Stability:	Stable for 12 months from the date of receipt of the product under proper storage and handling conditions. Avoid repeated freeze-thaw cycles.
RefSeq:	<u><a href="#">NP_005872</a></u>



[View online »](#)

Locus ID:	10295
UniProt ID:	<a href="#">O14874</a> , <a href="#">A0A024QZA9</a>
RefSeq Size:	2144
Cytogenetics:	16p11.2
RefSeq ORF:	1236
Synonyms:	BCKDKD; BDK
Summary:	The branched-chain alpha-ketoacid dehydrogenase complex (BCKD) is an important regulator of the valine, leucine, and isoleucine catabolic pathways. The protein encoded by this gene is found in the mitochondrion, where it phosphorylates and inactivates BCKD. Several transcript variants encoding different isoforms have been found for this gene. [provided by RefSeq, Dec 2012]
Protein Families:	Druggable Genome, Protein Kinase

### Product images:



Coomassie blue staining of purified BCKDK protein (Cat# [TP303601]). The protein was produced from HEK293T cells transfected with BCKDK cDNA clone (Cat# [RC203601]) using MegaTran 2.0 (Cat# [TT210002]).