

## Product datasheet for **TP303600**

### ARF6 (NM\_001663) Human Recombinant Protein

#### Product data:

**Product Type:** Recombinant Proteins

**Description:** Recombinant protein of human ADP-ribosylation factor 6 (ARF6), 20 µg

**Species:** Human

**Expression Host:** HEK293T

**Expression cDNA Clone or AA Sequence:** >RC203600 protein sequence  
Red=Cloning site Green=Tags(s)

MGKVLISKIFGNKEMRILMLGLDAAGKTTILYKCLKLQSVTTIPTVGFNVETVITYKNVKFNVWDVGGQDKI  
RPLWRHYTGTQGLIFWDCADRDRIDEARQELHRIINDREMRDAIILIFANKQDLPDAMKPHEIQEKLK  
LTRIRDRNWYVQPSCATSGDGLYEGLTWLTSNYKS

TRTRPLEQKLISEEDLAANDILDYKDDDDKV

**Tag:** C-Myc/DDK

**Predicted MW:** 19.9 kDa

**Concentration:** >0.05 µg/µL as determined by microplate BCA method

**Purity:** > 80% as determined by SDS-PAGE and Coomassie blue staining

**Buffer:** 25 mM Tris-HCl, 100 mM glycine, pH 7.3, 10% glycerol

**Preparation:** Recombinant protein was captured through anti-DDK affinity column followed by conventional chromatography steps.

**Note:** For testing in cell culture applications, please filter before use. Note that you may experience some loss of protein during the filtration process.

**Storage:** Store at -80°C.

**Stability:** Stable for 12 months from the date of receipt of the product under proper storage and handling conditions. Avoid repeated freeze-thaw cycles.

**RefSeq:** [NP\\_001654](#)

**Locus ID:** 382

**UniProt ID:** [P62330](#)

**RefSeq Size:** 3939



[View online »](#)

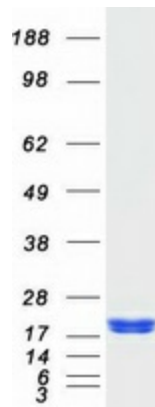
Cytogenetics: 14q21.3

RefSeq ORF: 525

**Summary:** This gene encodes a member of the human ARF gene family, which is part of the RAS superfamily. The ARF genes encode small guanine nucleotide-binding proteins that stimulate the ADP-ribosyltransferase activity of cholera toxin and play a role in vesicular trafficking and as activators of phospholipase D. The product of this gene is localized to the plasma membrane, and regulates vesicular trafficking, remodelling of membrane lipids, and signaling pathways that lead to actin remodeling. A pseudogene of this gene is located on chromosome 7. [provided by RefSeq, Jul 2008]

**Protein Pathways:** Endocytosis, Fc gamma R-mediated phagocytosis

### Product images:



Coomassie blue staining of purified ARF6 protein (Cat# TP303600). The protein was produced from HEK293T cells transfected with ARF6 cDNA clone (Cat# [RC203600]) using MegaTran 2.0 (Cat# [TT210002]).