

Product datasheet for TP303596M

Prolyl Endopeptidase (PREP) (NM_002726) Human Recombinant Protein

Product data:

Product Type:	Recombinant Proteins
Description:	Recombinant protein of human prolyl endopeptidase (PREP), 100 µg
Species:	Human
Expression Host:	HEK293T
Expression cDNA Clone or AA Sequence:	>RC203596 protein sequence Red=Cloning site Green=Tags(s)

MLSLQYPDVYRDETAVQDYHGHKICDPYAWLEDPPDSEQTKAFVEAQNKITVPFLEQCPIRGLYKERMTEL
YDYPKYSCHFKKGKRYFYFYNTGLQNQRVLYVQDSLEGEARVFLDPNILSDDGTVALRGYAFSEDGEYFA
YGLSASGSDWVTIKFMKVDGAKELPDVLERVKFSCMAWTHDGKGMFYNSYPQQDQKSDGTETSTNLHQKL
YYHVLGTDQSEDILCAEFPDEPKWMGGAELSDDGRYVLLSIREGCDPVNRLWYCDLQEQESSGIAGILKWW
KLIDNFEGEYDYVTNEGTVFTFKTNRQSPNYRVINIDFRDPEESKWKVLVPEHEKDVLEWIACVRSNFLV
LCYLHDVKNILQLHDLTTGALLKTFPLDVGSIVGYSGQKDDTEIFYQFTSFLSPGIYHCDLTKEELEPR
VFREVTVKGIDASDYQTVQIFYPSKDGTKIPMFIVHKKGIKLDGSHPAFLYGYGGFNISITPNYSVSRLI
FVRHMGGILAVANIRGGGEYGETWHKGGILANKQNCDFDFQCAAELYKEGYTSPKRLTINGGSNGGLLV
AACANQRPDLFGCVIAQVGVMDMLKFHKYTIGHAWTTDYGCSDSKQHFEWLKYSPLHNVKLPEADDIYQ
PSMLLLTADHDDRVPVPLHSLKFIATLQYIVGRSRKQSNPLLIHVDTKAGHGAGKPTAKVIEEVSDMFAFI
ARCLNVDWIP

TRTRPLEQKLISEEDLAANDILDYKDDDDKV

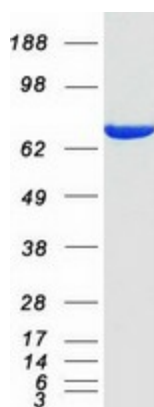
Tag:	C-Myc/DDK
Predicted MW:	80.5 kDa
Concentration:	>0.1 µg/µL as determined by microplate BCA method
Purity:	> 80% as determined by SDS-PAGE and Coomassie blue staining
Buffer:	25 mM Tris-HCl, 100 mM glycine, pH 7.3, 10% glycerol
Preparation:	Recombinant protein was captured through anti-DDK affinity column followed by conventional chromatography steps.
Note:	For testing in cell culture applications, please filter before use. Note that you may experience some loss of protein during the filtration process.
Storage:	Store at -80°C.



[View online »](#)

Stability:	Stable for 12 months from the date of receipt of the product under proper storage and handling conditions. Avoid repeated freeze-thaw cycles.
RefSeq:	NP_002717
Locus ID:	5550
UniProt ID:	P48147 , B2RAH7
RefSeq Size:	2943
Cytogenetics:	6q21
RefSeq ORF:	2130
Synonyms:	PE; PEP
Summary:	The protein encoded by this gene is a cytosolic prolyl endopeptidase that cleaves peptide bonds on the C-terminal side of prolyl residues within peptides that are up to approximately 30 amino acids long. Prolyl endopeptidases have been reported to be involved in the maturation and degradation of peptide hormones and neuropeptides. [provided by RefSeq, Jul 2008]
Protein Families:	Druggable Genome, Protease

Product images:



Coomassie blue staining of purified PREP protein (Cat# [TP303596]). The protein was produced from HEK293T cells transfected with PREP cDNA clone (Cat# [RC203596]) using MegaTran 2.0 (Cat# [TT210002]).