

Product datasheet for TP303596

Prolyl Endopeptidase (PREP) (NM_002726) Human Recombinant Protein

Product data:

Product Type: Recombinant Proteins

Description: Recombinant protein of human prolyl endopeptidase (PREP), 20 µg

Species: Human

Expression Host: HEK293T

Expression cDNA Clone or AA Sequence: >RC203596 protein sequence

or AA Sequence: **Red**=Cloning site **Green**=Tags(s)

MLSLQYPDVYRDETAVQDYHGHKICDPYAWLEDPDSEQTKAFVEAQNKITVPFLEQCPIRGLYKERMTEL
YDYPKYSCHFKKGKRYFYFYNTGLQNQRVLYVQDSLEGEARVFLDPNILSDDGTVALRGYAFSEDGEYFA
YGLSASGSDWVTIKFMKVDGAKELPDVLERVKFSCMAWTHDGKGMFYNSYPQQDGKSDGTETSTNLHQKL
YYHVLGTDQSEDILCAEFPDEPKWMGGAELSDDGRYVLLSIREGCDPVNRLWYCDLQEQESSGIAGILKWW
KLIDNFEGEYDYVTNEGTVFTFKTNRQSPNYRVINIDFRDPEESKWKVLVPEHEKDVLEWIACVRSNFLV
LCYLHDVKNILQLHDLTTGALLKTFPLDVGSIVGYSGQKKDTEIFYQFTSFLSPGIYHCDLTKEELEPR
VFREVTVKGIDASDYQTVQIFYPSKDGTIKIPMFIVHKKGIKLDGSHPAFLYGYGGFNISITPNYSVSRLI
FVRHMGGILAVANIRGGGEYGETWHKGGILANKQNCFDDFQCAAELYKEGYTSPKRLTINGGSNGGLLV
AACANQRPDLFGCVIAQVGVMDMLKFHKYTIGHAWTTDYGCSDSKQHFEWLKYSPLHNVKLPEADDIYQ
PSMLLLTADHDDRVPPLHSLKFIATLQYIVGRSRKQSNPLLIHVDTKAGHGAGKPTAKVIEEVSDMFAFI
ARCLNVDWIP

TRTRPLEQKLISEEDLAANDILDYKDDDDKV

Tag: C-Myc/DDK

Predicted MW: 80.5 kDa

Concentration: >0.1 µg/µL as determined by microplate BCA method

Purity: > 80% as determined by SDS-PAGE and Coomassie blue staining

Buffer: 25 mM Tris-HCl, 100 mM glycine, pH 7.3, 10% glycerol

Preparation: Recombinant protein was captured through anti-DDK affinity column followed by conventional chromatography steps.

Note: For testing in cell culture applications, please filter before use. Note that you may experience some loss of protein during the filtration process.

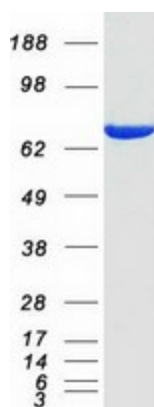
Storage: Store at -80°C.



[View online »](#)

| | |
|--------------------------|---|
| Stability: | Stable for 12 months from the date of receipt of the product under proper storage and handling conditions. Avoid repeated freeze-thaw cycles. |
| RefSeq: | NP_002717 |
| Locus ID: | 5550 |
| UniProt ID: | P48147 , B2RAH7 |
| RefSeq Size: | 2943 |
| Cytogenetics: | 6q21 |
| RefSeq ORF: | 2130 |
| Synonyms: | PE; PEP |
| Summary: | The protein encoded by this gene is a cytosolic prolyl endopeptidase that cleaves peptide bonds on the C-terminal side of prolyl residues within peptides that are up to approximately 30 amino acids long. Prolyl endopeptidases have been reported to be involved in the maturation and degradation of peptide hormones and neuropeptides. [provided by RefSeq, Jul 2008] |
| Protein Families: | Druggable Genome, Protease |

Product images:



Coomassie blue staining of purified PREP protein (Cat# TP303596). The protein was produced from HEK293T cells transfected with PREP cDNA clone (Cat# [RC203596]) using MegaTran 2.0 (Cat# [TT210002]).