

Product datasheet for **TP303592L**

PELO (NM_015946) Human Recombinant Protein

Product data:

Product Type:	Recombinant Proteins
Description:	Recombinant protein of human pelota homolog (Drosophila) (PELO), 1 mg
Species:	Human
Expression Host:	HEK293T
Expression cDNA Clone or AA Sequence:	>RC203592 protein sequence Red =Cloning site Green =Tags(s)

MKLVKRNIEKDNAGQVTLVPEEPEDMWHTYNLVQVGDLSRASTIRKVQTESSTGSGVGSNRVRTTLTLCVE
AIDFDSQACQLRVKGTNIQENEYVKMGAYHTIELEPNRQFTLAKKQWDSVLERIEQACDPAWSADVAAV
VMQEGLAHICLVTPSMTLTRAKVEVNIPRKRKGNCSQHDRALERFYEQVQAIQRHIHFVVKILVASP
GFVREQCDYMFQQAVKTDNKLLENRSKFLQVHASSGHKYSLEALCDPTVASRLSDTKAAGEVKALDD
FYKMLQHEPDRAFYGLKQVEKANEAMAIDTLLISDELFRHQDVATRSRYVRLVDSVKENAGTVRIFSSLH
VSGEQLSQLTGVAAILRFPVPELSDQEGDSSSEED

TRTRPLEQKLISEEDLAANDILDYKDDDDKV

Tag:	C-Myc/DDK
Predicted MW:	43.2 kDa
Concentration:	>0.05 µg/µL as determined by microplate BCA method
Purity:	> 80% as determined by SDS-PAGE and Coomassie blue staining
Buffer:	25 mM Tris-HCl, 100 mM glycine, pH 7.3, 10% glycerol
Preparation:	Recombinant protein was captured through anti-DDK affinity column followed by conventional chromatography steps.
Note:	For testing in cell culture applications, please filter before use. Note that you may experience some loss of protein during the filtration process.
Storage:	Store at -80°C.
Stability:	Stable for 12 months from the date of receipt of the product under proper storage and handling conditions. Avoid repeated freeze-thaw cycles.
RefSeq:	NP_057030
Locus ID:	53918



[View online »](#)

UniProt ID: [Q9BRX2](#)

RefSeq Size: 2941

Cytogenetics: 5q11.2

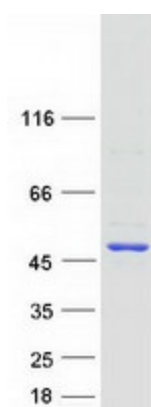
RefSeq ORF: 1155

Synonyms: CGI-17; PRO1770

Summary: This gene encodes a protein which contains a conserved nuclear localization signal. The encoded protein may have a role in spermatogenesis, cell cycle control, and in meiotic cell division. [provided by RefSeq, Jul 2008]

Protein Families: Druggable Genome

Product images:



Coomassie blue staining of purified PELO protein (Cat# [TP303592]). The protein was produced from HEK293T cells transfected with PELO cDNA clone (Cat# [RC203592]) using MegaTran 2.0 (Cat# [TT210002]).