

## Product datasheet for **TP303585**

### Cofilin 1 (CFL1) (NM\_005507) Human Recombinant Protein

#### Product data:

Product Type:	Recombinant Proteins
Description:	Recombinant protein of human cofilin 1 (non-muscle) (CFL1), 20 µg
Species:	Human
Expression Host:	HEK293T
Expression cDNA Clone or AA Sequence:	>RC203585 protein sequence <b>Red</b> =Cloning site <b>Green</b> =Tags(s)
	 MASGVAVSDGVIKVFNDMKVRKSSTPEEVKRRKKAFLFCLSEDKKNIIIEEGKEILVGDVGQTVDDPYAT FVKMLPDKDCRYALYDATYETKESKKEDLVFIFWAPESAPLKSMMIYASSKDAIKKKLTGIKHELQANCY EEVKDRCTLAEKLGGSAVISLEGKPL  <b>TRTRPLEQKLISEEDLAANDILDYKDDDDKV</b>
Tag:	C-Myc/DDK
Predicted MW:	18.3 kDa
Concentration:	>0.05 µg/µL as determined by microplate BCA method
Purity:	> 80% as determined by SDS-PAGE and Coomassie blue staining
Buffer:	25 mM Tris-HCl, 100 mM glycine, pH 7.3, 10% glycerol
Preparation:	Recombinant protein was captured through anti-DDK affinity column followed by conventional chromatography steps.
Note:	For testing in cell culture applications, please filter before use. Note that you may experience some loss of protein during the filtration process.
Storage:	Store at -80°C.
Stability:	Stable for 12 months from the date of receipt of the product under proper storage and handling conditions. Avoid repeated freeze-thaw cycles.
RefSeq:	<a href="#">NP_005498</a>
Locus ID:	1072
UniProt ID:	<a href="#">P23528</a> , <a href="#">V9HWI5</a>
RefSeq Size:	1260



[View online »](#)

Cytogenetics: 11q13.1

RefSeq ORF: 498

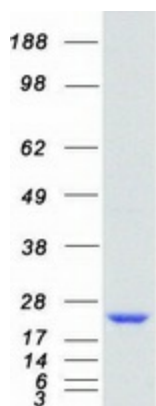
Synonyms: CFL; cofilin; HEL-S-15

**Summary:** The protein encoded by this gene can polymerize and depolymerize F-actin and G-actin in a pH-dependent manner. Increased phosphorylation of this protein by LIM kinase aids in Rho-induced reorganization of the actin cytoskeleton. Cofilin is a widely distributed intracellular actin-modulating protein that binds and depolymerizes filamentous F-actin and inhibits the polymerization of monomeric G-actin in a pH-dependent manner. It is involved in the translocation of actin-cofilin complex from cytoplasm to nucleus.[supplied by OMIM, Apr 2004]

**Protein Families:** Druggable Genome

**Protein Pathways:** Axon guidance, Fc gamma R-mediated phagocytosis, Regulation of actin cytoskeleton

### Product images:



Coomassie blue staining of purified CFL1 protein (Cat# TP303585). The protein was produced from HEK293T cells transfected with CFL1 cDNA clone (Cat# [RC203585]) using MegaTran 2.0 (Cat# [TT210002]).