

Product datasheet for **TP303580M**

CCT3 (NM_001008883) Human Recombinant Protein

Product data:

Product Type:	Recombinant Proteins
Description:	Recombinant protein of human chaperonin containing TCP1, subunit 3 (gamma) (CCT3), transcript variant 2, 100 µg
Species:	Human
Expression Host:	HEK293T
Expression cDNA Clone or AA Sequence:	>RC203580 representing NM_001008883 Red =Cloning site Green =Tags(s)

MGHRPVLVLSQNTKRESGRKVQSGNINAAKTIADIIRTCLGPKSMMKMLLDPMGGIVMTNDGNAILREIQ
VQHPAAKSMIEISRTQDEEVGDGTTSVIILAGEMLSVAEHFLEQQMHPTVVISAYRKALDDMISTLKKIS
IPVDISDSMMMLNIINSSITTKAISRWSSLACNIALDAVKMVQFEENGRKEIDIKKYARVEKIPGGIIE
SCVLRGVMINKDVTHPRMRRYIKNPRIVLLDSSLEYKKGESQTDIEITREEDFTRILQMEEEYIQQLCED
IIQLKPDVVITEKGISDLAQHYLMRANITAIRRVKTDNNRIARACGARIVSRPEELREDDVGTGAGLLE
IKKIGDEYFTFITDCKDPKACTILLRGASKEILSEVERNLDAMQVCRNVLLDPQLVPGGGASEMAVAHA
LTEKSKAMTGVEQWPYRAVAQALEVIPRTLIQNCGASTIRLLTSLRAKHTQENCETWGVNGETGLTVDMK
ELGIWEPLAVKLQTYKTAVETAVLLLRIIDIVSGHKKKGDDQSRQGGAPDAGQE

TRTRPLEQKLISEEDLAANDILDYKDDDDKV

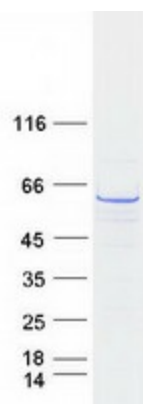
Tag:	C-Myc/DDK
Predicted MW:	60.3 kDa
Concentration:	>0.05 µg/µL as determined by microplate BCA method
Purity:	> 80% as determined by SDS-PAGE and Coomassie blue staining
Buffer:	25 mM Tris-HCl, 100 mM glycine, pH 7.3, 10% glycerol
Preparation:	Recombinant protein was captured through anti-DDK affinity column followed by conventional chromatography steps.
Note:	For testing in cell culture applications, please filter before use. Note that you may experience some loss of protein during the filtration process.
Storage:	Store at -80°C.



[View online »](#)

Stability:	Stable for 12 months from the date of receipt of the product under proper storage and handling conditions. Avoid repeated freeze-thaw cycles.
RefSeq:	<u>NP_001008883</u>
Locus ID:	7203
UniProt ID:	<u>P49368</u>
RefSeq Size:	2093
Cytogenetics:	1q22
RefSeq ORF:	1635
Synonyms:	CCT-gamma; CCTG; PIG48; TCP-1-gamma; TRIC5
Summary:	The protein encoded by this gene is a molecular chaperone that is a member of the chaperonin containing TCP1 complex (CCT), also known as the TCP1 ring complex (TRiC). This complex consists of two identical stacked rings, each containing eight different proteins. Unfolded polypeptides enter the central cavity of the complex and are folded in an ATP-dependent manner. The complex folds various proteins, including actin and tubulin. Alternate transcriptional splice variants have been characterized for this gene. In addition, a pseudogene of this gene has been found on chromosome 8. [provided by RefSeq, Aug 2010]

Product images:



Coomassie blue staining of purified CCT3 protein (Cat# [TP303580]). The protein was produced from HEK293T cells transfected with CCT3 cDNA clone (Cat# [RC203580]) using MegaTran 2.0 (Cat# [TT210002]).