

## Product datasheet for **TP303564L**

### RERG (NM\_032918) Human Recombinant Protein

#### Product data:

Product Type:	Recombinant Proteins
Description:	Recombinant protein of human RAS-like, estrogen-regulated, growth inhibitor (RERG), 1 mg
Species:	Human
Expression Host:	HEK293T
Expression cDNA Clone or AA Sequence:	>RC203564 protein sequence <b>Red</b> =Cloning site <b>Green</b> =Tags(s)
	MAKSAEVKLAIFGRAGVGKSALVWRFLTKRFIWEYDPTLESTYRHQATIDDEVSMELDTAGQEDTIQR EGHMRWGEGFVLVDITDRGSFEEVLPLKNILDEIKKPKNVTLILVGNKADLDHSRQVSTEEGEKLATEL ACAFYECSACTGEGNITEIFYELCREVRRRRMVQGKTRRRRSSTTHVKQAINKMLTKISS
	<b>TRTRPLEQKLISEEDLAANDILDYKDDDDKV</b>
Tag:	C-Myc/DDK
Predicted MW:	22.4 kDa
Concentration:	>0.05 µg/µL as determined by microplate BCA method
Purity:	> 80% as determined by SDS-PAGE and Coomassie blue staining
Buffer:	25 mM Tris-HCl, 100 mM glycine, pH 7.3, 10% glycerol
Preparation:	Recombinant protein was captured through anti-DDK affinity column followed by conventional chromatography steps.
Note:	For testing in cell culture applications, please filter before use. Note that you may experience some loss of protein during the filtration process.
Storage:	Store at -80°C.
Stability:	Stable for 12 months from the date of receipt of the product under proper storage and handling conditions. Avoid repeated freeze-thaw cycles.
RefSeq:	<u><a href="#">NP_116307</a></u>
Locus ID:	85004
UniProt ID:	<u><a href="#">Q96A58</a></u> , <u><a href="#">A0A024RAT4</a></u>
RefSeq Size:	2325



[View online »](#)

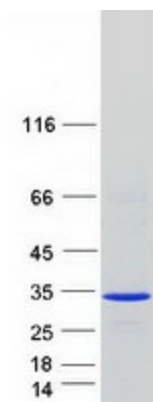
Cytogenetics: 12p12.3

RefSeq ORF: 597

Summary: RERG, a member of the RAS superfamily of GTPases, inhibits cell proliferation and tumor formation (Finlin et al., 2001 [PubMed 11533059]).[supplied by OMIM, Mar 2009]

Protein Families: Druggable Genome

### Product images:



Coomassie blue staining of purified RERG protein (Cat# [TP303564]). The protein was produced from HEK293T cells transfected with RERG cDNA clone (Cat# [RC203564]) using MegaTran 2.0 (Cat# [TT210002]).