

Product datasheet for **TP303563M**

TBCC (NM_003192) Human Recombinant Protein

Product data:

Product Type:	Recombinant Proteins
Description:	Recombinant protein of human tubulin folding cofactor C (TBCC), 100 µg
Species:	Human
Expression Host:	HEK293T
Expression cDNA Clone or AA Sequence:	>RC203563 protein sequence Red =Cloning site Green =Tags(s)
	<p>MESVSCSAAAVRTGDMESQRDLSLVPERLQRREQERQLEVERRKQKRQNQEVEKENSHEFFVATFARERAA VEELLERAESVERLEEAASRLQGLQKLINDSVFFLAAYDLRQQEALARLQAALAERRRGLQPKKRFAFK TRGKDAASSTKVDAAPGIPPAVESIQDSPLPKKAEGDLGPSWVCGFSNLESQVLEKRASELHQRDVLLE LSNCTVRLYGPNPNTLRLTKAHSCKLLCGPVSTSVFLEDCSDCVLAVACQQLRIHSTKDTRIFLQVTSRAI VEDCSGIQFAPYTWSYPEIDKDFESSGLDRSKNNWNDVDDFNWLARDMASPNWSILPEEERNIQWD</p> <p>TRTRPLEQKLISEEDLAANDILDYKDDDDKV</p>
Tag:	C-Myc/DDK
Predicted MW:	39 kDa
Concentration:	>0.05 µg/µL as determined by microplate BCA method
Purity:	> 80% as determined by SDS-PAGE and Coomassie blue staining
Buffer:	25 mM Tris-HCl, 100 mM glycine, pH 7.3, 10% glycerol
Preparation:	Recombinant protein was captured through anti-DDK affinity column followed by conventional chromatography steps.
Note:	For testing in cell culture applications, please filter before use. Note that you may experience some loss of protein during the filtration process.
Storage:	Store at -80°C.
Stability:	Stable for 12 months from the date of receipt of the product under proper storage and handling conditions. Avoid repeated freeze-thaw cycles.
RefSeq:	<u>NP_003183</u>
Locus ID:	6903



[View online »](#)

UniProt ID: [Q15814](#)

RefSeq Size: 1675

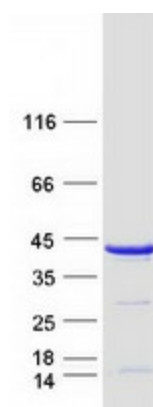
Cytogenetics: 6p21.1

RefSeq ORF: 1038

Synonyms: CFC

Summary: Cofactor C is one of four proteins (cofactors A, D, E, and C) involved in the pathway leading to correctly folded beta-tubulin from folding intermediates. Cofactors A and D are believed to play a role in capturing and stabilizing beta-tubulin intermediates in a quasi-native confirmation. Cofactor E binds to the cofactor D/beta-tubulin complex; interaction with cofactor C then causes the release of beta-tubulin polypeptides that are committed to the native state. [provided by RefSeq, Jul 2008]

Product images:



Coomassie blue staining of purified TBCC protein (Cat# [TP303563]). The protein was produced from HEK293T cells transfected with TBCC cDNA clone (Cat# [RC203563]) using MegaTran 2.0 (Cat# [TT210002]).