

Product datasheet for **TP303556L**

RCC1 (NM_001048199) Human Recombinant Protein

Product data:

Product Type:	Recombinant Proteins
Description:	Recombinant protein of human SNHG3-RCC1 readthrough transcript (SNHG3-RCC1), transcript variant 3, 1 mg
Species:	Human
Expression Host:	HEK293T
Expression cDNA Clone or AA Sequence:	>RC203556 protein sequence Red =Cloning site Green =Tags(s)
	<p>MSPKRIAKRRSPPADAIPKSKKVKVSHRSHSTEPGLVLTGQGDVGQLGLGENVMERKKPALVSIPEDVW QAEAGGMHTVCLSKSGQVYSFGCNDEGALGRDTSVEGSEMVP GKVELQEKVVQVSAGDSHTAALTDGGRV FLWGSFRDNNGVIGLLEPMKSMVPVQVQLDVPVVKVASGNDHLVMLTADGDLYLGCGEQQQLGRVPEL FANRGGRRQLERLLVPKCVMLKSRGSRGHVRFQDAFCGAYFTFAISHEGHVYGFGLSNYHQLTGTPGTESC FIPQNLTSFKNSTKSWVGFSGGQHHTVCMDSEGKAYSLGRAEYGRLLGEGAEKSIPTLISRLPAVSSV ACGASVGYAVTKDGRVFAWGMGTNYQLGTGQDEDAWSPVEMMGKQLENRVVLSVSSGGQHTVLLVKDKEQ S</p> <p>TRTRPLEQKLISEEDLAANDILDYKDDDDKV</p>
Tag:	C-Myc/DDK
Predicted MW:	44.8 kDa
Concentration:	>0.05 µg/µL as determined by microplate BCA method
Purity:	> 80% as determined by SDS-PAGE and Coomassie blue staining
Buffer:	25 mM Tris-HCl, 100 mM glycine, pH 7.3, 10% glycerol
Preparation:	Recombinant protein was captured through anti-DDK affinity column followed by conventional chromatography steps.
Note:	For testing in cell culture applications, please filter before use. Note that you may experience some loss of protein during the filtration process.
Storage:	Store at -80°C.
Stability:	Stable for 12 months from the date of receipt of the product under proper storage and handling conditions. Avoid repeated freeze-thaw cycles.



[View online »](#)

RefSeq: [NP_001041664](#)

Locus ID: 1104

UniProt ID: [P18754](#), [Q5T081](#)

RefSeq Size: 2715

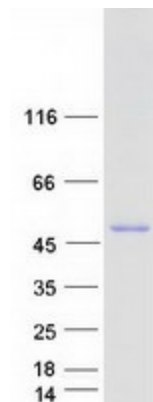
Cytogenetics: 1p35.3

RefSeq ORF: 1263

Synonyms: CHC1; RCC1-I; SNHG3-RCC1

Summary: Guanine-nucleotide releasing factor that promotes the exchange of Ran-bound GDP by GTP, and thereby plays an important role in RAN-mediated functions in nuclear import and mitosis (PubMed:1944575, PubMed:17435751, PubMed:20668449, PubMed:22215983, PubMed:11336674). Contributes to the generation of high levels of chromosome-associated, GTP-bound RAN, which is important for mitotic spindle assembly and normal progress through mitosis (PubMed:12194828, PubMed:17435751, PubMed:22215983). Via its role in maintaining high levels of GTP-bound RAN in the nucleus, contributes to the release of cargo proteins from importins after nuclear import (PubMed:22215983). Involved in the regulation of onset of chromosome condensation in the S phase (PubMed:3678831). Binds both to the nucleosomes and double-stranded DNA (PubMed:17435751, PubMed:18762580).[UniProtKB/Swiss-Prot Function]

Product images:



Coomassie blue staining of purified RCC1 protein (Cat# [TP303556]). The protein was produced from HEK293T cells transfected with RCC1 cDNA clone (Cat# [RC203556]) using MegaTran 2.0 (Cat# [TT210002]).