

Product datasheet for **TP303552L**

KLHDC3 (NM_057161) Human Recombinant Protein

Product data:

Product Type: Recombinant Proteins

Description: Recombinant protein of human kelch domain containing 3 (KLHDC3), 1 mg

Species: Human

Expression Host: HEK293T

Expression cDNA Clone or AA Sequence: >RC203552 protein sequence
Red=Cloning site **Green**=Tags(s)

MLRWTVHLEGGPRRVNHAHAVGHRVYSGGYCSGEDYETLRQIDVHIFNAVSLRWTKLPPVKS AIRGQA
PVVPYMR YGHSTVLIDDTVLLWGGGRNDTEGACNVLYAFDVNTHKWFTPRVSGTVPGARDGHSACVLGKI
M
YIFGGYEQQADCFSNDIHKLDTSTMTWTLICTKGSPARWRDFHSATMLGSHMYVFGGRADRFPGPFHSNN
E
IYCNIRIVFDTRTEAWLDCPPTPVLPEGRRSHSAFGYNGELYIFGGYNARLNRHFHDLWKFNVPVSFTWKK
IEPKGKGPCPRRRQCCCIVGDKIVLFGGTSPSPEEGLGDEFDLIDHSDLHILDFSPSLKTLCKLAVIQYN
LDQSCLPHDIRWELNAMTTNSNISRPVSSHG

TRTRPLEQKLISEEDLAANDILDYKDDDDKV

Tag: C-Myc/DDK

Predicted MW: 42.9 kDa

Concentration: >0.05 µg/µL as determined by microplate BCA method

Purity: > 80% as determined by SDS-PAGE and Coomassie blue staining

Buffer: 25 mM Tris-HCl, 100 mM glycine, pH 7.3, 10% glycerol

Preparation: Recombinant protein was captured through anti-DDK affinity column followed by conventional chromatography steps.

Note: For testing in cell culture applications, please filter before use. Note that you may experience some loss of protein during the filtration process.

Storage: Store at -80°C.

Stability: Stable for 12 months from the date of receipt of the product under proper storage and handling conditions. Avoid repeated freeze-thaw cycles.



[View online »](#)

RefSeq: NP_476502

Locus ID: 116138

UniProt ID: Q9BQ90

RefSeq Size: 2029

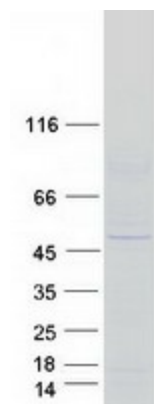
Cytogenetics: 6p21.1

RefSeq ORF: 1146

Synonyms: dj20C7.3; PEAS

Summary: The protein encoded by this gene contains six repeated kelch motifs that are structurally similar to recombination activating gene 2, a protein involved in the activation of the V(D)J recombination. In mouse, this gene is found to be expressed specifically in testis. Its expression in pachytene spermatocytes is localized to cytoplasm and meiotic chromatin, suggesting that this gene may be involved in meiotic recombination. [provided by RefSeq, Jun 2012]

Product images:



Coomassie blue staining of purified KLHDC3 protein (Cat# [TP303552]). The protein was produced from HEK293T cells transfected with KLHDC3 cDNA clone (Cat# [RC203552]) using MegaTran 2.0 (Cat# [TT210002]).