

Product datasheet for **TP303550M**

HPDL (NM_032756) Human Recombinant Protein

Product data:

Product Type:	Recombinant Proteins
Description:	Recombinant protein of human 4-hydroxyphenylpyruvate dioxygenase-like (HPDL), 100 µg
Species:	Human
Expression Host:	HEK293T
Expression cDNA Clone or AA Sequence:	>RC203550 protein sequence Red =Cloning site Green =Tags(s)

MAAPALRLCHIAFHVPAGQPLARNLQRLFGFQPLASREVDGWRQLALRSGDAVFLVNEGAGSGEPLYGLD
PRHAVPSATNLCFDVADAGAATRELAALGCSVPVPPVVRVDAQGAATYAVVSSPAGILSLTLERAGYRG
PFLPGFRPVSSAPGPGWWSRVDHLTLACTPGSSPTLLRWFHDCCLGFCHLPLSPGEDPELGLEMTAGFGLG
GLRLTALQAQPGSIVPTLVLAESLPGATTRQDQVEQFLARHKGPGLQHVGLYTPNIVEATEGEVATAGGQF
LAPPGAYYQQPGKERQIRAAGHEPHLLARQGILLDGDGKGFLLQVFTKSLFTEDTFFLELIQRQGATGFG
QGNIRALWQSVQEQSARSQEA

TRTRPLEQKLISEEDLAANDILDYKDDDDKV

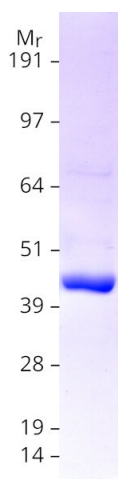
Tag:	C-Myc/DDK
Predicted MW:	39.2 kDa
Concentration:	>0.05 µg/µL as determined by microplate BCA method
Purity:	> 80% as determined by SDS-PAGE and Coomassie blue staining
Buffer:	25 mM Tris-HCl, 100 mM glycine, pH 7.3, 10% glycerol
Preparation:	Recombinant protein was captured through anti-DDK affinity column followed by conventional chromatography steps.
Note:	For testing in cell culture applications, please filter before use. Note that you may experience some loss of protein during the filtration process.
Storage:	Store at -80°C.
Stability:	Stable for 12 months from the date of receipt of the product under proper storage and handling conditions. Avoid repeated freeze-thaw cycles.
RefSeq:	NP_116145
Locus ID:	84842



[View online »](#)

UniProt ID:	Q96IR7
RefSeq Size:	1803
Cytogenetics:	1p34.1
RefSeq ORF:	1113
Synonyms:	4-HPPD-L; GLOXD1
Summary:	The protein encoded by this intronless gene localizes to mitochondria, where it may function as 4-hydroxyphenylpyruvate dioxygenase. Clinical studies have identified several bi-allelic variants in this gene that lower the level of the encoded protein and lead to a clinically variable form of pediatric-onset spastic movement disorder. [provided by RefSeq, Aug 2020]

Product images:



Coomassie blue staining of purified HPDL protein (Cat# [TP303550]). The protein was produced from HEK293T cells transfected with HPDL cDNA clone (Cat# [RC203550]) using MegaTran 2.0 (Cat# [TT210002]).