

Product datasheet for **TP303548**

ARPM1 (ACTRT3) (NM_032487) Human Recombinant Protein

Product data:

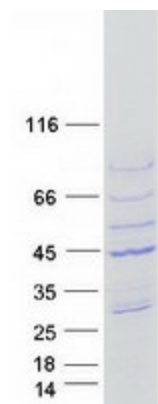
| | |
|---------------------------------------|--|
| Product Type: | Recombinant Proteins |
| Description: | Recombinant protein of human actin related protein M1 (ARPM1), 20 µg |
| Species: | Human |
| Expression Host: | HEK293T |
| Expression cDNA Clone or AA Sequence: | >RC203548 protein sequence Red =Cloning site Green =Tags(s) |
| | <p>MNHCQLPVVIDNGSGMIKAGVAGCREPQFIYPNIIGRAKGQSRAAQGGLELCVGDQAQDWRSSLFISYPV ERGLITSCEDMEIMWKHIYDYNLKLKPCDGPVLITEPALNPLANRQQITEMFFEHLGVPAFYMSIQAVLA LFAAGFTTGLVLNSGAGVTQSVPIFEGYCLPHGVQQLDLAGLDLTNYLMVLMKNHGIMLLSASDRKIVED IKESFCYVAMNYEEEMAKKPDCLKVYQLPDGKVIQLHDQLFSCPEALFSPCHMNLEAPGIDKICFSSIM KCDTGLRNSFFSNILAGGSTSFPGLDKRLVKDIKVAPANTAVQVIAPPERKISVWMGGSILASLSAFQ DMWITAAEFKEVGNIVHQRCF</p> <p>TRTRPLEQKLISEEDLAANDILDYKDDDDKV</p> |
| Tag: | C-Myc/DDK |
| Predicted MW: | 40.8 kDa |
| Concentration: | >0.05 µg/µL as determined by microplate BCA method |
| Purity: | > 80% as determined by SDS-PAGE and Coomassie blue staining |
| Buffer: | 25 mM Tris-HCl, 100 mM glycine, pH 7.3, 10% glycerol |
| Preparation: | Recombinant protein was captured through anti-DDK affinity column followed by conventional chromatography steps. |
| Note: | For testing in cell culture applications, please filter before use. Note that you may experience some loss of protein during the filtration process. |
| Storage: | Store at -80°C. |
| Stability: | Stable for 12 months from the date of receipt of the product under proper storage and handling conditions. Avoid repeated freeze-thaw cycles. |
| RefSeq: | <u>NP_115876</u> |
| Locus ID: | 84517 |



[View online »](#)

UniProt ID: [Q9BYD9](#)
 RefSeq Size: 2017
 Cytogenetics: 3q26.2
 RefSeq ORF: 1116
 Synonyms: ARP-T3; ARPM1

Product images:



Coomassie blue staining of purified ACTRT3 protein (Cat# TP303548). The protein was produced from HEK293T cells transfected with ACTRT3 cDNA clone (Cat# [RC203548]) using MegaTran 2.0 (Cat# [TT210002]).