

## Product datasheet for **TP303545L**

### SOX10 (NM\_006941) Human Recombinant Protein

#### Product data:

Product Type:	Recombinant Proteins
Description:	Recombinant protein of human SRY (sex determining region Y)-box 10 (SOX10), 1 mg
Species:	Human
Expression Host:	HEK293T
Expression cDNA	>RC203545 protein sequence
Clone or AA Sequence:	Red=Cloning site Green=Tags(s)

MAEEQDLSEVELSPVGSEEPRLCLSPGSAPSLGPDGGGGGSLRASPGGELGKVKKEQQDGEADDDKFPV  
CIREAVSQVLSGYDWTLPMPVVRVNGASKSKPHVKRPMNAFMVWAQAARRKLADQYPHLHNAELSKTLGK  
LWRLLESKRPFIIEAERLRMQHKKDHPDYKYQPRRRKNGKAAQGEAECPPGGEAEQGGTAAIQAHYKSA  
HLDHRHPGEGSPMSDGNPEHPSGQSHGPPTPTPKTELSQSGKADPKRDGRSMGEGGKPHIDFGNVDIGE  
ISHEVMSNMETFDVAELDQYLPPNGHPGHVSSYSAAGYGLGSALAVASGHS AWISKPPGVALPTVSPPGV  
DAKAQVKTETAGPQGPPHYTDQPSTSQIAYTSLSLPHYGSAPFISRPQFDYSDHQPSGPYYGHSGQASG  
LYSAFSYMGPSQRPLYTAISDPSPSGPQSHSPTHWEQPVYTTLSRP

TRTRPLEQKLISEEDLAANDILDYKDDDDKV

Tag:	C-Myc/DDK
Predicted MW:	49.7 kDa
Concentration:	>0.05 µg/µL as determined by microplate BCA method
Purity:	> 80% as determined by SDS-PAGE and Coomassie blue staining
Buffer:	25 mM Tris-HCl, 100 mM glycine, pH 7.3, 10% glycerol
Preparation:	Recombinant protein was captured through anti-DDK affinity column followed by conventional chromatography steps.
Note:	For testing in cell culture applications, please filter before use. Note that you may experience some loss of protein during the filtration process.
Storage:	Store at -80°C.
Stability:	Stable for 12 months from the date of receipt of the product under proper storage and handling conditions. Avoid repeated freeze-thaw cycles.
RefSeq:	<a href="#">NP_008872</a>



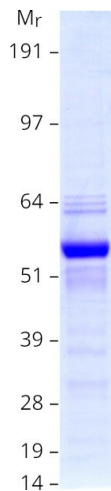
[View online »](#)

Locus ID: 6663  
UniProt ID: [P56693](#), [A0A024R1N6](#)  
RefSeq Size: 2882  
Cytogenetics: 22q13.1  
RefSeq ORF: 1398  
Synonyms: DOM; PCWH; WS2E; WS4; WS4C

**Summary:** This gene encodes a member of the SOX (SRY-related HMG-box) family of transcription factors involved in the regulation of embryonic development and in the determination of the cell fate. The encoded protein may act as a transcriptional activator after forming a protein complex with other proteins. This protein acts as a nucleocytoplasmic shuttle protein and is important for neural crest and peripheral nervous system development. Mutations in this gene are associated with Waardenburg-Shah and Waardenburg-Hirschsprung disease. [provided by RefSeq, Jul 2008]

**Protein Families:** Adult stem cells, ES Cell Differentiation/IPS, Induced pluripotent stem cells, Transcription Factors

### Product images:



Coomassie blue staining of purified SOX10 protein (Cat# [TP303545]). The protein was produced from HEK293T cells transfected with SOX10 cDNA clone (Cat# [RC203545]) using MegaTran 2.0 (Cat# [TT210002]).