

Product datasheet for TP303545

SOX10 (NM_006941) Human Recombinant Protein

Product data:

| | |
|-----------------------|---|
| Product Type: | Recombinant Proteins |
| Description: | Recombinant protein of human SRY (sex determining region Y)-box 10 (SOX10), 20 µg |
| Species: | Human |
| Expression Host: | HEK293T |
| Expression cDNA | >RC203545 protein sequence |
| Clone or AA Sequence: | Red=Cloning site Green=Tags(s) |

MAEEQDLSEVELSPVGSEEPRLSPGSAPSLGPDGGGGGSLRASPGGELGKVKKEQQDGEADDDKFPV
CIREAVSQVLSGYDWTLPMPVVRVNGASKSKPHVKRPMNAFMVWAQAARRKLADQYPHLHNAELSKTLGK
LWRLLES DKRPFIEEAERLRMQHKKDHPDYKYQPRRRKNGKAAQGEAECPPGGEAEQGGTAAIQAHYKSA
HLDHRHPGEGSPMSDGNPEHPSGQSHGPPTPTPKTELSGKADPKRDGRSMGEGGKPHIDFGNVDIGE
ISHEVMSNMETFDAELDQYLPPNGHPGHVSSYSAGYGLGSALAVASGHS AWISKPPGVALPTVSPPGV
DAKAQVKTETAGPQGPPHYTDQPSTSQIAYTSLSLPHYGSAPFISIRPQFDYSDHQPSGPYYGHSGQASG
LYSAFSYMGPSQRPLYTAISDPSPSGPQSHSPTHWEQPVYTTLSRP

TRTRPLEQKLISEEDLAANDILDYKDDDDKV

| | |
|----------------|--|
| Tag: | C-Myc/DDK |
| Predicted MW: | 49.7 kDa |
| Concentration: | >0.05 µg/µL as determined by microplate BCA method |
| Purity: | > 80% as determined by SDS-PAGE and Coomassie blue staining |
| Buffer: | 25 mM Tris-HCl, 100 mM glycine, pH 7.3, 10% glycerol |
| Preparation: | Recombinant protein was captured through anti-DDK affinity column followed by conventional chromatography steps. |
| Note: | For testing in cell culture applications, please filter before use. Note that you may experience some loss of protein during the filtration process. |
| Storage: | Store at -80°C. |
| Stability: | Stable for 12 months from the date of receipt of the product under proper storage and handling conditions. Avoid repeated freeze-thaw cycles. |
| RefSeq: | NP_008872 |



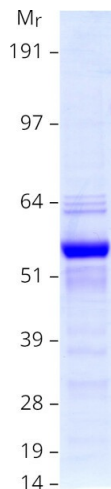
[View online »](#)

Locus ID: 6663
UniProt ID: [P56693](#), [A0A024R1N6](#)
RefSeq Size: 2882
Cytogenetics: 22q13.1
RefSeq ORF: 1398
Synonyms: DOM; PCWH; WS2E; WS4; WS4C

Summary: This gene encodes a member of the SOX (SRY-related HMG-box) family of transcription factors involved in the regulation of embryonic development and in the determination of the cell fate. The encoded protein may act as a transcriptional activator after forming a protein complex with other proteins. This protein acts as a nucleocytoplasmic shuttle protein and is important for neural crest and peripheral nervous system development. Mutations in this gene are associated with Waardenburg-Shah and Waardenburg-Hirschsprung disease. [provided by RefSeq, Jul 2008]

Protein Families: Adult stem cells, ES Cell Differentiation/IPS, Induced pluripotent stem cells, Transcription Factors

Product images:



Coomassie blue staining of purified SOX10 protein (Cat# TP303545). The protein was produced from HEK293T cells transfected with SOX10 cDNA clone (Cat# [RC203545]) using MegaTran 2.0 (Cat# [TT210002]).