

Product datasheet for **TP303543M**

NUDC (NM_006600) Human Recombinant Protein

Product data:

Product Type:	Recombinant Proteins
Description:	Recombinant protein of human nuclear distribution gene C homolog (A. nidulans) (NUDC), 100 µg
Species:	Human
Expression Host:	HEK293T
Expression cDNA Clone or AA Sequence:	>RC203543 protein sequence Red =Cloning site Green =Tags(s)

MGGEQEEERFDGMLLAMAQQHEGGVQELVNTFFSFLRRKTDFFIGGEEGMAEKLITQTFSHHNQLAQKTR
REKRARQEAERREKAERAARLAKEAKSETSGPQIKELTDEEAERLQLEIDQKKDAENHEAQLKNGSLDSP
GKQDTEEDEEEDKDKGKLPNLGNGADLPNYRWTQTLSELDAVPFCVNFRLKGDMMVVDIQRRLRVG
LKGQPAIIDGELYNEVKVESSWLIEDGKVVTVHLEKINKMEWWSRLVSSDPEINTKKINPENSKLSDLD
SETRSMVEKMMYDQRQKSMGLPTSDEQKKQEILKKFMDQHPEMDFSKAKFN

TRTRPLEQKLISEEDLAANDILDYKDDDDKV

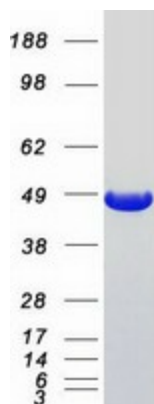
Tag:	C-Myc/DDK
Predicted MW:	38.1 kDa
Concentration:	>0.05 µg/µL as determined by microplate BCA method
Purity:	> 80% as determined by SDS-PAGE and Coomassie blue staining
Buffer:	25 mM Tris-HCl, 100 mM glycine, pH 7.3, 10% glycerol
Preparation:	Recombinant protein was captured through anti-DDK affinity column followed by conventional chromatography steps.
Note:	For testing in cell culture applications, please filter before use. Note that you may experience some loss of protein during the filtration process.
Storage:	Store at -80°C.
Stability:	Stable for 12 months from the date of receipt of the product under proper storage and handling conditions. Avoid repeated freeze-thaw cycles.
RefSeq:	NP_006591
Locus ID:	10726



[View online »](#)

UniProt ID:	Q9Y266
RefSeq Size:	1813
Cytogenetics:	1p36.11
RefSeq ORF:	993
Synonyms:	HNUDC; MNUDC; NPD011
Summary:	This gene encodes a nuclear distribution protein that plays an essential role in mitosis and cytokinesis. The encoded protein is involved in spindle formation during mitosis and in microtubule organization during cytokinesis. Pseudogenes of this gene are found on chromosome 2. [provided by RefSeq, Feb 2012]

Product images:



Coomassie blue staining of purified NUDC protein (Cat# [TP303543]). The protein was produced from HEK293T cells transfected with NUDC cDNA clone (Cat# [RC203543]) using MegaTran 2.0 (Cat# [TT210002]).