

Product datasheet for **TP303541M**

CPNE4 (NM_130808) Human Recombinant Protein

Product data:

Product Type:	Recombinant Proteins
Description:	Recombinant protein of human copine IV (CPNE4), 100 µg
Species:	Human
Expression Host:	HEK293T
Expression cDNA Clone or AA Sequence:	>RC203541 protein sequence Red =Cloning site Green =Tags(s)

MKKMSNIYESAANTLGIFNSPCLTKVELRVACKGISDRDALS KPDPCVILKMQSHGQWFEVDRTEVIRT
 INPVYSKLFTVDFYFEEVQRLRFEVHDISSNHNGLKEADFLGGMECTLGQIVSQRKLSKLLKHGNTAGK
 SSITVIAEELSGNDDYVELAFNARKLDDKDFFSKSDPFLEIFRMNDDATQQLVHRTEVMMNNLSPAWKSF
 KSVNSLCSGDPDRRLKCIWDWDSNGKHDFIGFTSTFKEMRGAMEGKQVQWECINPKYAKKKKNYK
 NS

GTVILNLCKIHKMHSFLDYIMGGCQIQFTVAIDFTASNGDPRNSCSLHYIHPYQPNEYLKALVAVGEICQ
 DYDSDKMFPAFGFGARIPPEYTVSHDFAINFNEDNPECAGIQGVVEAYQSCLPKLQLYGPTNIAPIIQKV
 AKSASEETNTKEASQYFILLITDGVITDMADTREAIVHASHLPMSVIIVGVGNADFSDMQMLDGGDGL
 RSPKGEPVLRDIVQFVPRNFKHASPAALAKSVLAEVNPQVVDYNGKGKPKCSSEMYESSRTLAP

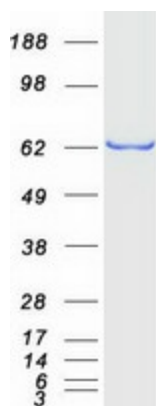
TRTRPLEQKLISEEDLAANDILDYKDDDDKV

Tag:	C-Myc/DDK
Predicted MW:	62.2 kDa
Concentration:	>0.05 µg/µL as determined by microplate BCA method
Purity:	> 80% as determined by SDS-PAGE and Coomassie blue staining
Buffer:	25 mM Tris-HCl, 100 mM glycine, pH 7.3, 10% glycerol
Preparation:	Recombinant protein was captured through anti-DDK affinity column followed by conventional chromatography steps.
Note:	For testing in cell culture applications, please filter before use. Note that you may experience some loss of protein during the filtration process.
Storage:	Store at -80°C.


[View online »](#)

Stability:	Stable for 12 months from the date of receipt of the product under proper storage and handling conditions. Avoid repeated freeze-thaw cycles.
RefSeq:	<u>NP_570720</u>
Locus ID:	131034
UniProt ID:	<u>Q96A23</u>
RefSeq Size:	4194
Cytogenetics:	3q22.1
RefSeq ORF:	1671
Synonyms:	COPN4; CPN4
Summary:	This gene belongs to the highly conserved copine family. It encodes a calcium-dependent, phospholipid-binding protein, which may be involved in membrane trafficking, mitogenesis and development. Alternative splicing results in multiple transcript variants. [provided by RefSeq, Jan 2014]
Protein Families:	Druggable Genome

Product images:



Coomassie blue staining of purified CPNE4 protein (Cat# [TP303541]). The protein was produced from HEK293T cells transfected with CPNE4 cDNA clone (Cat# [RC203541]) using MegaTran 2.0 (Cat# [TT210002]).