

Product datasheet for **TP303541L**

CPNE4 (NM_130808) Human Recombinant Protein

Product data:

Product Type: Recombinant Proteins
Description: Recombinant protein of human copine IV (CPNE4), 1 mg
Species: Human
Expression Host: HEK293T
Expression cDNA Clone or AA Sequence: >RC203541 protein sequence
Red=Cloning site **Green**=Tags(s)

MKKMSNIYESAANTLGIFNSPCLTKVELRVACKGISDRDALS KPDPCVILKMQSHGQWFEVDRTEVIRT
INPVYSKLFTVDFYFEEVQRLRFEVHDISSNHNLKKEADFLGGMECTLGQIVSQRKLSKLLKHGNTAGK
SSITVIAEELSGNDDYVELAFNARKLDDKDFFSKSDPFLEIFRMNDDATQQLVHRTEVVMNNLSPA WKS F
KSVNSLCSGDPDRRLKCIVWDWDSNGKHDFIGFTSTFKEMRGAMEGKQVQWECINPKYKAKKKNYKNS
GTVILNLCKIHKMHSFLDYIMGGCQIQFTVAIDFTASNGDPRNSCSLHYIHPYQPNEYLKALVAVGEICQ
DYDSDKMFPAFGFGARIPPEYTVSHDFAINFNEDNPECAGIQGVVEAYQSCLPKLQLYGPTNIAPIIQKV
AKSASEETNTKEASQYFILLILTDGVIDMADTREAIVHASHLPMSVIIVGVGNADFSDMQMLDGDGIL
RSPKGEVLRDIVQFVPRNFKHASPAALAKSVLAEVNPQVVDYNGKGKPKCSSEMYESSRTLAP

TRTRPLEQKLISEEDLAANDILDYKDDDDKV

Tag: C-Myc/DDK
Predicted MW: 62.2 kDa
Concentration: >0.05 µg/µL as determined by microplate BCA method
Purity: > 80% as determined by SDS-PAGE and Coomassie blue staining
Buffer: 25 mM Tris-HCl, 100 mM glycine, pH 7.3, 10% glycerol
Preparation: Recombinant protein was captured through anti-DDK affinity column followed by conventional chromatography steps.
Note: For testing in cell culture applications, please filter before use. Note that you may experience some loss of protein during the filtration process.
Storage: Store at -80°C.
Stability: Stable for 12 months from the date of receipt of the product under proper storage and handling conditions. Avoid repeated freeze-thaw cycles.



[View online »](#)

RefSeq: [NP_570720](#)

Locus ID: 131034

UniProt ID: [Q96A23](#)

RefSeq Size: 4194

Cytogenetics: 3q22.1

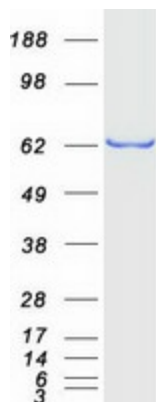
RefSeq ORF: 1671

Synonyms: COPN4; CPN4

Summary: This gene belongs to the highly conserved copine family. It encodes a calcium-dependent, phospholipid-binding protein, which may be involved in membrane trafficking, mitogenesis and development. Alternative splicing results in multiple transcript variants. [provided by RefSeq, Jan 2014]

Protein Families: Druggable Genome

Product images:



Coomassie blue staining of purified CPNE4 protein (Cat# [TP303541]). The protein was produced from HEK293T cells transfected with CPNE4 cDNA clone (Cat# [RC203541]) using MegaTran 2.0 (Cat# [TT210002]).