

Product datasheet for **TP303540L**

B MyB (MYBL2) (NM_002466) Human Recombinant Protein

Product data:

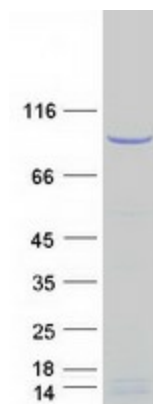
Product Type:	Recombinant Proteins
Description:	Recombinant protein of human v-myb myeloblastosis viral oncogene homolog (avian)-like 2 (MYBL2), 1 mg
Species:	Human
Expression Host:	HEK293T
Expression cDNA Clone or AA Sequence:	>RC203540 protein sequence Red =Cloning site Green =Tags(s)
	<p>MSRRTRCEDLDELHYQDSDVPEQRDSKCKVKWTHEEDEQLRALVRQFGQQDWKFLASHFPNRTDQQCQ YRWLRVLPDLVKGPPWTKEEDQKVIELVKKYGTQWTLIAKHLKGRGKQCRERWHNHLNPEVKKSCWTE EEDRIICEAHKVLGNRWAEIAKMLPGRTDNAVKNHWNSTIKRKVDGGLSESKDCKPPVYLLLELEDKD GLQSAQPTGQGSLLTNWPSVPPTIKEEENSEEELAAATTSKEQEPIGTDLDAVRTPEPLEEFPKREDQE GSPPETSLPYKVVVEAANLLIPAVGSSLSEALDIESDPDAWCDLSKFDLPEEPSAEDSINNSLVQLQAS HQQQVLPQRPSALVPSVTEYRLDGHTISDLRSSRGELIPISPSTEVGGSGIGTPPSVLKRQRKRVAL SPVTENSTLSFLDSCNSLTPKSTPVKTLPFSPSQFLNFWNKQDTLELESPLTSTPVCSQKVVTPLH RDKTPLHQKHAAFVTPDQKYSMDNTPHTPTPFKNALEKYGPLKPLPQTPHLEEDLKEVLRSEAGIELIIE DDIRPEKQKRKPLRRSPIKKVRKSLALDIVDEDVKLMMSTLPKSLSLPTTAPSNSSSLTSGIKEDNSL LNQGFLQAKPEKAAVAQKPRSHFTTPAPMSSAWKTVACGGTRDQLFMQEAKARQLLGRKPSHTSRTLILS</p> <p>TRTRPLEQKLISEEDLAANDILDYKDDDDKV</p>
Tag:	C-Myc/DDK
Predicted MW:	78.6 kDa
Concentration:	>0.05 µg/µL as determined by microplate BCA method
Purity:	> 80% as determined by SDS-PAGE and Coomassie blue staining
Buffer:	25 mM Tris-HCl, 100 mM glycine, pH 7.3, 10% glycerol
Preparation:	Recombinant protein was captured through anti-DDK affinity column followed by conventional chromatography steps.
Note:	For testing in cell culture applications, please filter before use. Note that you may experience some loss of protein during the filtration process.
Storage:	Store at -80°C.



[View online »](#)

Stability:	Stable for 12 months from the date of receipt of the product under proper storage and handling conditions. Avoid repeated freeze-thaw cycles.
RefSeq:	NP_002457
Locus ID:	4605
UniProt ID:	P10244
RefSeq Size:	2785
Cytogenetics:	20q13.12
RefSeq ORF:	2100
Synonyms:	B-MYB; BMYB
Summary:	The protein encoded by this gene, a member of the MYB family of transcription factor genes, is a nuclear protein involved in cell cycle progression. The encoded protein is phosphorylated by cyclin A/cyclin-dependent kinase 2 during the S-phase of the cell cycle and possesses both activator and repressor activities. It has been shown to activate the cell division cycle 2, cyclin D1, and insulin-like growth factor-binding protein 5 genes. Two transcript variants encoding different isoforms have been found for this gene. [provided by RefSeq, Jul 2013]
Protein Families:	Druggable Genome, Stem cell - Pluripotency, Transcription Factors

Product images:



Coomassie blue staining of purified MYBL2 protein (Cat# [TP303540]). The protein was produced from HEK293T cells transfected with MYBL2 cDNA clone (Cat# [RC203540]) using MegaTran 2.0 (Cat# [TT210002]).