

## Product datasheet for **TP303535M**

### **XPNPEP1 (NM\_020383) Human Recombinant Protein**

#### **Product data:**

**Product Type:** Recombinant Proteins

**Description:** Recombinant protein of human X-prolyl aminopeptidase (aminopeptidase P) 1, soluble (XPNPEP1), 100 µg

**Species:** Human

**Expression Host:** HEK293T

**Expression cDNA** >RC203535 protein sequence

**Clone or AA** **Red**=Cloning site **Green**=Tags(s)

**Sequence:**

MPPKVTSELLRQLRQAMRNSEYVTEPIQAYIIPSGDAHQSEYIAPCDCRRAFVSGFDGSAGTAIITEEHA  
AMWTDGRYFLQAAKQMDSNWTLMKMGKDTPTQEDWLVSVLPEGSRVGVDP LIIPTDYWKMAKVLR SAG  
HHLIPVKENLVDKIWTRPERPCKPLLTLGLDYGTSWKDKVADLRLKMAERNVMWFVVTALDEIAWLFN  
LRGSDVEHNPVFFSYAIIGLETIMLFIDGDRIDAPSVKEHLLLDLGLEAEYRIQVHPYKSILSELKALCA  
DLSPREKVVVSDKASYAVSETIPKDHRCMPYTPICIAKAVKNSAESEGMRRAHIKDAVALCELFNWLEK  
EVPKGGVTEISAADKAEFRRQQADFVDSLFP TISSTGPNGAIHYAPVPETNRTLSDLDEVYLIDSGAQY  
KDGTTDVTRTMHFGTPTAYEKECFYVLKGHIAVSAAVFPTGTKGHLLDSFARSALWDSGLDYLHGTG GH  
VGSFLNVHEGPCGISYKTFSDPELEAGMIVTDEPGYEDGAFGIRIENVLVVVPVKTKYFNFNRRGSLTFE  
PLTLVPIQTKMIDVDSLTDKCDWLNNYHLTCRDVIGKELQKQGRQEALWLIRETQPISKQH

**TRTRPLEQKLISEEDLAANDILDYKDDDDKV**

**Tag:** C-Myc/DDK

**Predicted MW:** 74.6 kDa

**Concentration:** >0.05 µg/µL as determined by microplate BCA method

**Purity:** > 80% as determined by SDS-PAGE and Coomassie blue staining

**Buffer:** 25 mM Tris-HCl, 100 mM glycine, pH 7.3, 10% glycerol

**Preparation:** Recombinant protein was captured through anti-DDK affinity column followed by conventional chromatography steps.

**Note:** For testing in cell culture applications, please filter before use. Note that you may experience some loss of protein during the filtration process.

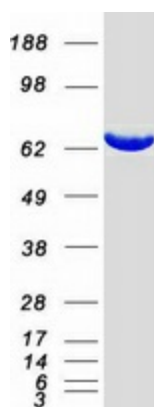
**Storage:** Store at -80°C.



[View online »](#)

<b>Stability:</b>	Stable for 12 months from the date of receipt of the product under proper storage and handling conditions. Avoid repeated freeze-thaw cycles.
<b>RefSeq:</b>	<a href="#">NP_065116</a>
<b>Locus ID:</b>	7511
<b>UniProt ID:</b>	<a href="#">Q9NQW7</a> , <a href="#">Q9NQW7-3</a>
<b>RefSeq Size:</b>	2557
<b>Cytogenetics:</b>	10q25.1
<b>RefSeq ORF:</b>	1869
<b>Synonyms:</b>	APP1; SAMP; XPNPEP; XPNPEPL; XPNPEPL1
<b>Summary:</b>	This gene encodes the cytosolic form of a metalloaminopeptidase that catalyzes the cleavage of the N-terminal amino acid adjacent to a proline residue. The gene product may play a role in degradation and maturation of tachykinins, neuropeptides, and peptide hormones. Alternative splicing results in multiple transcript variants.[provided by RefSeq, Nov 2009]
<b>Protein Families:</b>	Druggable Genome, Protease

### Product images:



Coomassie blue staining of purified XPNPEP1 protein (Cat# [TP303535]). The protein was produced from HEK293T cells transfected with XPNPEP1 cDNA clone (Cat# [RC203535]) using MegaTran 2.0 (Cat# [TT210002]).