

## Product datasheet for TP303531L

### COPE (NM\_007263) Human Recombinant Protein

#### Product data:

Product Type:	Recombinant Proteins
Description:	Recombinant protein of human coatomer protein complex, subunit epsilon (COPE), transcript variant 1, 1 mg
Species:	Human
Expression Host:	HEK293T
Expression cDNA Clone or AA Sequence:	>RC203531 protein sequence Red=Cloning site Green=Tags(s)

MAPPAPGPASGGSGEVDELFDVKNAFYIGSYQQCINEAQRVKLSSPERDVERDVFLYRAYLAQRKFGVVL  
DEIKPSSAPELQAVRMFADYLAHESRRDSIVAELDREMSRSVDVTNTTFLMAASIYLDQNPDAALRAL  
HQGDSLECTAMTVQILLKLDRLDLARKELKRMQDLDEDATLTQLATAWVSLATGGEKLQDAYYIFQEMAD  
KCSPTLLLLNGQAACHMAQGRWEAAEGLLQEALDKDSGYPETLVNLIVLSQHLGKPPPEVTNRYLSQLKDA  
HRSHPFKEYQAKENDFDRLLVLYAPSA

TRTRPLEQKLISEEDLAANDILDYKDDDDKV

Tag:	C-Myc/DDK
Predicted MW:	34.3 kDa
Concentration:	>0.05 µg/µL as determined by microplate BCA method
Purity:	> 80% as determined by SDS-PAGE and Coomassie blue staining
Buffer:	25 mM Tris-HCl, 100 mM glycine, pH 7.3, 10% glycerol
Preparation:	Recombinant protein was captured through anti-DDK affinity column followed by conventional chromatography steps.
Note:	For testing in cell culture applications, please filter before use. Note that you may experience some loss of protein during the filtration process.
Storage:	Store at -80°C.
Stability:	Stable for 12 months from the date of receipt of the product under proper storage and handling conditions. Avoid repeated freeze-thaw cycles.
RefSeq:	<a href="#">NP_009194</a>
Locus ID:	11316



[View online »](#)

UniProt ID: [O14579](#)

RefSeq Size: 1134

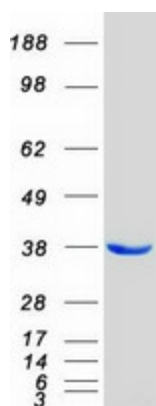
Cytogenetics: 19p13.11

RefSeq ORF: 924

Synonyms: epsilon-COP

**Summary:** The product of this gene is an epsilon subunit of coatamer protein complex. Coatamer is a cytosolic protein complex that binds to dilysine motifs and reversibly associates with Golgi non-clathrin-coated vesicles. It is required for budding from Golgi membranes, and is essential for the retrograde Golgi-to-ER transport of dilysine-tagged proteins. Coatamer complex consists of at least the alpha, beta, beta', gamma, delta, epsilon and zeta subunits. Alternatively spliced transcript variants encoding different isoforms have been identified. [provided by RefSeq, Jul 2008]

### Product images:



Coomassie blue staining of purified COPE protein (Cat# [TP303531]). The protein was produced from HEK293T cells transfected with COPE cDNA clone (Cat# [RC203531]) using MegaTran 2.0 (Cat# [TT210002]).