

## Product datasheet for **TP303515**

### SDSL (NM\_138432) Human Recombinant Protein

#### Product data:

**Product Type:** Recombinant Proteins

**Description:** Recombinant protein of human serine dehydratase-like (SDSL), 20 µg

**Species:** Human

**Expression Host:** HEK293T

**Expression cDNA Clone  
or AA Sequence:** >RC203515 protein sequence  
**Red**=Cloning site **Green**=Tags(s)

MDGPVAEHAKQEPFHVWTPLESWALSQVAGMPVFLKCENVQPSGSFKIRGIGHFCQEMAKKGCRLVCS  
SGGNAGIAAAYAARKLGIPATIVLPESLQVQRLQGEAEVQLTGKVVDEANLRAQELAKRDGWENVP  
PFDHPLIWKGHASLVQELKAVLRTPPGALVLAVGGGGLLAGVWAGLLEVGWQHVPIIAMETHGAHCFNAA  
ITAGKLVLPDITSVAKSLGAKTVAARALECMQVCKIHSEVVEDTEAVSAVQQLLDDERMLVEPACGAAL  
AAIYSGLLRRLQAEGCLPPSLTSVVVIVCGGNNINSRELQALKTHLGQV

**TRTRPLEQKLISEEDLAANDILDYKDDDDKV**

**Tag:** C-Myc/DDK

**Predicted MW:** 34.5 kDa

**Concentration:** >0.05 µg/µL as determined by microplate BCA method

**Purity:** > 80% as determined by SDS-PAGE and Coomassie blue staining

**Buffer:** 25 mM Tris-HCl, 100 mM glycine, pH 7.3, 10% glycerol

**Preparation:** Recombinant protein was captured through anti-DDK affinity column followed by conventional chromatography steps.

**Note:** For testing in cell culture applications, please filter before use. Note that you may experience some loss of protein during the filtration process.

**Storage:** Store at -80°C.

**Stability:** Stable for 12 months from the date of receipt of the product under proper storage and handling conditions. Avoid repeated freeze-thaw cycles.

**RefSeq:** [NP\\_612441](#)

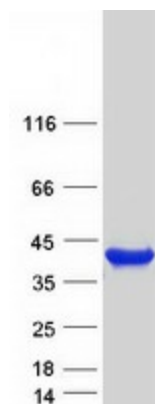
**Locus ID:** 113675



[View online »](#)

UniProt ID:	<a href="#">Q96GA7</a> , <a href="#">A0A024RBL2</a>
RefSeq Size:	1414
Cytogenetics:	12q24.13
RefSeq ORF:	987
Synonyms:	cSDH; SDH 2; SDS-RS1; TDH
Summary:	Has low serine dehydratase and threonine dehydratase activity.[UniProtKB/Swiss-Prot Function]

### Product images:



Coomassie blue staining of purified SDSL protein (Cat# TP303515). The protein was produced from HEK293T cells transfected with SDSL cDNA clone (Cat# [RC203515]) using MegaTran 2.0 (Cat# [TT210002]).