

Product datasheet for **TP303511**

ERp19 (TXNDC12) (NM_015913) Human Recombinant Protein

Product data:

Product Type:	Recombinant Proteins
Description:	Recombinant protein of human thioredoxin domain containing 12 (endoplasmic reticulum) (TXNDC12), 20 µg
Species:	Human
Expression Host:	HEK293T
Expression cDNA Clone or AA Sequence:	>RC203511 protein sequence Red =Cloning site Green =Tags(s)
	 METRPRLGATCLLGFSFLLLVISSDGHNGLGKGFGDHIHWRTLEDGKKEAAASGLPLMVIIHKSWCGACK ALKPKFAESTEISELSHNFVMVNLEDEEPPKHEDFSPDGGYIPRILFLDPSGKVHPEIINENGNPSYKYF YVSAEQVVQGMKEAQERLTGDAFRKKHLEDEL TR TRPLEQKLISEEDLAANDILDYKDDDDKV
Tag:	C-Myc/DDK
Predicted MW:	19 kDa
Concentration:	>0.05 µg/µL as determined by microplate BCA method
Purity:	> 80% as determined by SDS-PAGE and Coomassie blue staining
Buffer:	25 mM Tris-HCl, 100 mM glycine, pH 7.3, 10% glycerol
Preparation:	Recombinant protein was captured through anti-DDK affinity column followed by conventional chromatography steps.
Note:	For testing in cell culture applications, please filter before use. Note that you may experience some loss of protein during the filtration process.
Storage:	Store at -80°C.
Stability:	Stable for 12 months from the date of receipt of the product under proper storage and handling conditions. Avoid repeated freeze-thaw cycles.
RefSeq:	NP_056997
Locus ID:	51060
UniProt ID:	O95881



[View online »](#)

RefSeq Size: 2412

Cytogenetics: 1p32.3

RefSeq ORF: 516

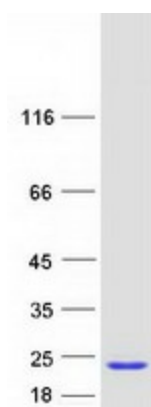
Synonyms: AG1; AGR1; ERP16; ERP18; ERP19; hAG-1; hTLP19; PDIA16; TLP19

Summary: This gene encodes a member of the thioredoxin superfamily. Members of this family are characterized by a conserved active motif called the thioredoxin fold that catalyzes disulfide bond formation and isomerization. This protein localizes to the endoplasmic reticulum and has a single atypical active motif. The encoded protein is mainly involved in catalyzing native disulfide bond formation and displays activity similar to protein-disulfide isomerases. This protein may play a role in defense against endoplasmic reticulum stress. Alternate splicing results in both coding and non-coding variants. [provided by RefSeq, Mar 2012]

Protein Families: Druggable Genome, Transmembrane

Protein Pathways: Glutathione metabolism

Product images:



Coomassie blue staining of purified TXNDC12 protein (Cat# TP303511). The protein was produced from HEK293T cells transfected with TXNDC12 cDNA clone (Cat# [RC203511]) using MegaTran 2.0 (Cat# [TT210002]).