

Product datasheet for **TP303500L**

IRF1 (NM_002198) Human Recombinant Protein

Product data:

Product Type:	Recombinant Proteins
Description:	Recombinant protein of human interferon regulatory factor 1 (IRF1), 1 mg
Species:	Human
Expression Host:	HEK293T
Expression cDNA Clone or AA Sequence:	>RC203500 protein sequence Red =Cloning site Green =Tags(s)
	<p>MPITRMRMRPWLEMQINSNQIPGLIWINKEEMIFQIPWKHAAKHGWDINKDACLFRSWAIHTGRYKAGEK EPDPKTKANFRFCAMNSLPDIEEVKDQSRNKGSSAVRVYRMLPPLTKNQKSKSSRDAKSKAKRKSC GDSSPDTFSDGLSSSTLPDDHSSYTPGYMQDLEVEQALTPALSPCAVSSTLPDWHIPVEVVPDSTSDLY NFQVSPMPSTSEATTDEDEEGKLPEDIMKLEQSEWQPTNVDGKGYLLNEPGVQPTSVYGFDFSCKEEPEI DSPGGDIGLSLQRVFTDLKNMDATWLDSLTPVRLPSIQAIPCAP</p> <p>TRTRPLEQKLISEEDLAANDILDYKDDDDKV</p>
Tag:	C-Myc/DDK
Predicted MW:	36.3 kDa
Concentration:	>0.05 µg/µL as determined by microplate BCA method
Purity:	> 80% as determined by SDS-PAGE and Coomassie blue staining
Buffer:	25 mM Tris-HCl, 100 mM glycine, pH 7.3, 10% glycerol
Preparation:	Recombinant protein was captured through anti-DDK affinity column followed by conventional chromatography steps.
Note:	For testing in cell culture applications, please filter before use. Note that you may experience some loss of protein during the filtration process.
Storage:	Store at -80°C.
Stability:	Stable for 12 months from the date of receipt of the product under proper storage and handling conditions. Avoid repeated freeze-thaw cycles.
RefSeq:	<u>NP_002189</u>
Locus ID:	3659



[View online »](#)

UniProt ID: [P10914](#), [Q6FHN8](#)

RefSeq Size: 3567

Cytogenetics: 5q31.1

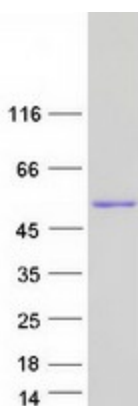
RefSeq ORF: 975

Synonyms: IRF-1; MAR

Summary: The protein encoded by this gene is a transcriptional regulator and tumor suppressor, serving as an activator of genes involved in both innate and acquired immune responses. The encoded protein activates the transcription of genes involved in the body's response to viruses and bacteria, playing a role in cell proliferation, apoptosis, the immune response, and DNA damage response. This protein represses the transcription of several other genes. As a tumor suppressor, it both suppresses tumor cell growth and stimulates an immune response against tumor cells. Defects in this gene have been associated with gastric cancer, myelogenous leukemia, and lung cancer. [provided by RefSeq, Aug 2017]

Protein Families: Druggable Genome, Transcription Factors

Product images:



Coomassie blue staining of purified IRF1 protein (Cat# [TP303500]). The protein was produced from HEK293T cells transfected with IRF1 cDNA clone (Cat# [RC203500]) using MegaTran 2.0 (Cat# [TT210002]).