

## Product datasheet for **TP303498L**

### ATP6V0D1 (NM\_004691) Human Recombinant Protein

#### Product data:

Product Type:	Recombinant Proteins
Description:	Recombinant protein of human ATPase, H <sup>+</sup> transporting, lysosomal 38kDa, V0 subunit d1 (ATP6V0D1), 1 mg
Species:	Human
Expression Host:	HEK293T
Expression cDNA Clone or AA Sequence:	>RC203498 protein sequence <b>Red</b> =Cloning site <b>Green</b> =Tags(s)
	<p>MSFFPELYFNVDNGYLEGLVVRGLKAGVLSQADYLNLVQCETLEDLKLHLQSTDYGNFLANEASPLTVSVI DDRLKEKMVVEFRHMRNHAYEPLASFLDFITYSYMIDNVILLITGTLHQRSIAELVPKCHPLGSFEQMEA VNIAQTPAELYNAILVDTPLAAFFQDCISEQDLDEMNIIEIRNTLYKAYLESFYKFCTLLGGTTADAMCP ILEFEADRRAFIITINSFGTELSKEDRAKLFPHCGRLYPEGLAQLARADDYEQVKNVADYYPEYKLLFEG AGSNPGDKTLEDRLFHEVKNLKLAFLNQFHFGVYAFVKLKEQECRNIVWIAECIAQRHRAKIDNYIPI F</p> <p><b>TRTRPLEQKLISEEDLAANDILDYKDDDDKV</b></p>
Tag:	C-Myc/DDK
Predicted MW:	40.1 kDa
Concentration:	>0.05 µg/µL as determined by microplate BCA method
Purity:	> 80% as determined by SDS-PAGE and Coomassie blue staining
Buffer:	25 mM Tris-HCl, 100 mM glycine, pH 7.3, 10% glycerol
Preparation:	Recombinant protein was captured through anti-DDK affinity column followed by conventional chromatography steps.
Note:	For testing in cell culture applications, please filter before use. Note that you may experience some loss of protein during the filtration process.
Storage:	Store at -80°C.
Stability:	Stable for 12 months from the date of receipt of the product under proper storage and handling conditions. Avoid repeated freeze-thaw cycles.
RefSeq:	<u><a href="#">NP_004682</a></u>



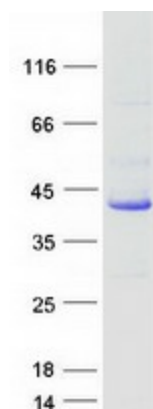
[View online »](#)

Locus ID:	9114
UniProt ID:	<a href="#">P61421</a>
RefSeq Size:	1688
Cytogenetics:	16q22.1
RefSeq ORF:	1053
Synonyms:	ATP6D; ATP6DV; P39; VATX; VMA6; VPATPD

**Summary:** This gene encodes a component of vacuolar ATPase (V-ATPase), a multisubunit enzyme that mediates acidification of eukaryotic intracellular organelles. V-ATPase dependent organelle acidification is necessary for such intracellular processes as protein sorting, zymogen activation, receptor-mediated endocytosis, and synaptic vesicle proton gradient generation. V-ATPase is composed of a cytosolic V1 domain and a transmembrane V0 domain. The V1 domain consists of three A and three B subunits, two G subunits plus the C, D, E, F, and H subunits. The V1 domain contains the ATP catalytic site. The V0 domain consists of five different subunits: a, c, c', c'', and d. Additional isoforms of many of the V1 and V0 subunit proteins are encoded by multiple genes or alternatively spliced transcript variants. This encoded protein is known as the D subunit and is found ubiquitously. [provided by RefSeq, Jul 2008]

**Protein Pathways:** Epithelial cell signaling in Helicobacter pylori infection, Lysosome, Metabolic pathways, Oxidative phosphorylation, Vibrio cholerae infection

### Product images:



Coomassie blue staining of purified ATP6V0D1 protein (Cat# [TP303498]). The protein was produced from HEK293T cells transfected with ATP6V0D1 cDNA clone (Cat# [RC203498]) using MegaTran 2.0 (Cat# [TT210002]).