

Product datasheet for **TP303487**

ENTPD6 (NM_001247) Human Recombinant Protein

Product data:

Product Type:	Recombinant Proteins
Description:	Recombinant protein of human ectonucleoside triphosphate diphosphohydrolase 6 (putative function) (ENTPD6), transcript variant 1, 20 µg
Species:	Human
Expression Host:	HEK293T
Expression cDNA Clone or AA Sequence:	>RC203487 protein sequence Red =Cloning site Green =Tags(s)

MKKGIRYETSRKTSYIFQPQHGPWQTRMRKISNHGSLRVAKVAYPLGLCVGVFIYVAYIKWHRATATQAF
FSITRAAPGARWGQQAHSPLGTAADGHEVFYIMFDAGSTGTRVHVFQFTRPPRETPTLTHETFKALKPG
LSAYADDVEKSAQGIRELLDVAKQDIPDFWKATPLVLKATAGLRLLPGEKAQKLLQKVKEVFKASPFLV
GDDCVSIMNGTDEGVSAWITINFLTGSLKTPGGSSVGM L DLGGGSTQIAFLPRVEGTLQASPPGYLTALR
MFNRTYKLYSYSYLGLGLMSARLAILGGVEGQPAKDGKELVSPCLSPSFKGEWEHAEVTYRVSGQKAAAS
LHELCAARVSEVLQNRVHRTEEVKHVDFYAFSYYYDLAAGVGLIDAEKGGSLVVGDFEIAAKYVCRTLET
QPQSSPFCMDLTYVSLLLQFEFGFPRSKVLKLRTRKIDNVETSWALGAIFHYIDSLNRQKSPAS

SGPTRTRPLEQKLISEEDLAANDILDYKDDDDKV

Tag:	C-Myc/DDK
Predicted MW:	53.1 kDa
Concentration:	>0.05 µg/µL as determined by microplate BCA method
Purity:	> 80% as determined by SDS-PAGE and Coomassie blue staining
Buffer:	25 mM Tris-HCl, 100 mM glycine, pH 7.3, 10% glycerol
Preparation:	Recombinant protein was captured through anti-DDK affinity column followed by conventional chromatography steps.
Note:	For testing in cell culture applications, please filter before use. Note that you may experience some loss of protein during the filtration process.
Storage:	Store at -80°C.
Stability:	Stable for 12 months from the date of receipt of the product under proper storage and handling conditions. Avoid repeated freeze-thaw cycles.



[View online »](#)

RefSeq: [NP_001238](#)

Locus ID: 955

UniProt ID: [O75354](#)

RefSeq Size: 2787

Cytogenetics: 20p11.21

RefSeq ORF: 2118

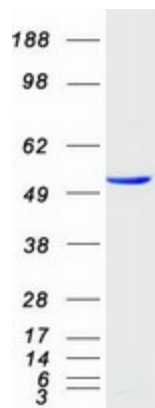
Synonyms: CD39L2; dj738P15.3; IL-6SAG; IL6ST2; NTPDase-6

Summary: ENTPD6 is similar to E-type nucleotidases (NTPases). NTPases, such as CD39, mediate catabolism of extracellular nucleotides. ENTPD6 contains 4 apyrase-conserved regions which are characteristic of NTPases. Alternative splicing results in multiple transcript variants encoding different isoforms. [provided by RefSeq, Dec 2015]

Protein Families: Secreted Protein, Transmembrane

Protein Pathways: Purine metabolism, Pyrimidine metabolism

Product images:



Coomassie blue staining of purified ENTPD6 protein (Cat# TP303487). The protein was produced from HEK293T cells transfected with ENTPD6 cDNA clone (Cat# [RC203487]) using MegaTran 2.0 (Cat# [TT210002]).