

Product datasheet for **TP303486L**

POLR1C (NM_203290) Human Recombinant Protein

Product data:

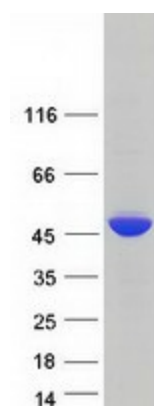
Product Type:	Recombinant Proteins
Description:	Recombinant protein of human polymerase (RNA) I polypeptide C, 30kDa (POLR1C), transcript variant 1, 1 mg
Species:	Human
Expression Host:	HEK293T
Expression cDNA Clone or AA Sequence:	>RC203486 protein sequence Red =Cloning site Green =Tags(s)
	MAASQAVEEMRSRVVLGEGFVRNVHTTDFPGNYSYDDAWDQDRFEKNFRVDVHMDENSLEFDMVGIDA AIANAFRRILLAEVPTMAVEKVLVYNNTSIVQDEILAHRLGLIPIHADPRLFEYRNQGDEEGTEIDTLQF RLQVRCTRNPAAKDSSDPNELYNHKVYTRHMTWIPLGNQADLFPEGTIRPVHDDILIAQLRPGQEIDL LMHCVKGIGKDHAKFSPVATASYRLLPDITLLEPVEGEAAEELSRCFSPGVIEVQEVQGKKVARVANPRL DTFSREIFRNEKLLKVVRLARVRDHYIFSVESTGVLPPDVLVSEAIKVLGMGKRRFLDELDAVQMD
	TRTRPLEQKLISEEDLAANDILDYKDDDDKV
Tag:	C-Myc/DDK
Predicted MW:	39.1 kDa
Concentration:	>0.05 µg/µL as determined by microplate BCA method
Purity:	> 80% as determined by SDS-PAGE and Coomassie blue staining
Buffer:	25 mM Tris-HCl, 100 mM glycine, pH 7.3, 10% glycerol
Preparation:	Recombinant protein was captured through anti-DDK affinity column followed by conventional chromatography steps.
Note:	For testing in cell culture applications, please filter before use. Note that you may experience some loss of protein during the filtration process.
Storage:	Store at -80°C.
Stability:	Stable for 12 months from the date of receipt of the product under proper storage and handling conditions. Avoid repeated freeze-thaw cycles.
RefSeq:	<u>NP_976035</u>
Locus ID:	9533



[View online »](#)

UniProt ID:	Q15160
RefSeq Size:	1353
Cytogenetics:	6p21.1
RefSeq ORF:	1038
Synonyms:	AC40; HLD11; RPA5; RPA39; RPA40; RPAC1; RPC40; TCS3
Summary:	The protein encoded by this gene is a subunit of both RNA polymerase I and RNA polymerase III complexes. The encoded protein is part of the Pol core element. Mutations in this gene have been associated with Treacher Collins syndrome (TCS) and hypomyelinating leukodystrophy 11. Alternative splicing results in multiple transcript variants. [provided by RefSeq, Jan 2016]
Protein Families:	Druggable Genome, Stem cell - Pluripotency, Transcription Factors
Protein Pathways:	Cytosolic DNA-sensing pathway, Metabolic pathways, Purine metabolism, Pyrimidine metabolism, RNA polymerase

Product images:



Coomassie blue staining of purified POLR1C protein (Cat# [TP303486]). The protein was produced from HEK293T cells transfected with POLR1C cDNA clone (Cat# [RC203486]) using MegaTran 2.0 (Cat# [TT210002]).