

Product datasheet for **TP303483M**

CDC42EP1 (NM_007061) Human Recombinant Protein

Product data:

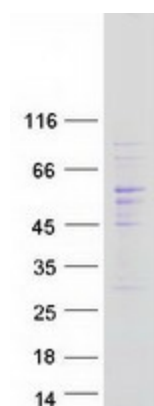
Product Type:	Recombinant Proteins
Description:	Recombinant protein of human CDC42 effector protein (Rho GTPase binding) 1 (CDC42EP1), transcript variant 2, 100 µg
Species:	Human
Expression Host:	HEK293T
Expression cDNA Clone or AA Sequence:	>RC203483 protein sequence Red =Cloning site Green =Tags(s)
	MPGPQGGGAATMSLGKLSVGVWSSSQGKRRLTADMISHPLGDFRHTMHVGRGGDVFGDTSFLSNHGGSSGSTRSPRFLAKKLQLVRRVGAAPRRMASPPAPSPAPPAISPIIKNAISLPQLNQAAYDSLWVGKLSFDSSPTSSTDGHSYGLDSGFCTISRLPRSEKPHDRDRDGSFPSEPLRRSDSLLSFRDLDLGPSLLSEL LGVMSLPEAPAAETPAPAAANPPAPTANPTGPAANPPATTANPPAPAATPTGPAANPPAPAAASSTPHGHCP NGVTAGLGPVAEVKSSPVGGGPRGPAGPALGRHWGAGWDGGHHYPEMDARQERVEVLPQARASWESLDEE WRAPQAGSRTPVPSTVQANTFEFADAEEDDEVKV
	TRTRPLEQKLISEEDLAANDILDYKDDDDKV
Tag:	C-Myc/DDK
Predicted MW:	39.5 kDa
Concentration:	>0.05 µg/µL as determined by microplate BCA method
Purity:	> 80% as determined by SDS-PAGE and Coomassie blue staining
Buffer:	25 mM Tris-HCl, 100 mM glycine, pH 7.3, 10% glycerol
Preparation:	Recombinant protein was captured through anti-DDK affinity column followed by conventional chromatography steps.
Note:	For testing in cell culture applications, please filter before use. Note that you may experience some loss of protein during the filtration process.
Storage:	Store at -80°C.
Stability:	Stable for 12 months from the date of receipt of the product under proper storage and handling conditions. Avoid repeated freeze-thaw cycles.
RefSeq:	<u>NP_008992</u>



[View online »](#)

Locus ID:	11135
UniProt ID:	Q00587
RefSeq Size:	2182
Cytogenetics:	22q13.1
RefSeq ORF:	1152
Synonyms:	55 kDa bone marrow stromal/endothelial cell protein; BORG5; CDC42 effector protein (Rho GTPase binding) 1; CDC42 effector protein 1; CEP1; CEP1, BORG5, MSE55, MGC15316; MGC15316; MSE55; OTTHUMP00000028709; serum constituent protein
Summary:	CDC42 is a member of the Rho GTPase family that regulates multiple cellular activities, including actin polymerization. The protein encoded by this gene is a CDC42 binding protein that mediates actin cytoskeleton reorganization at the plasma membrane. This protein is secreted and is primarily found in bone marrow. [provided by RefSeq, Jul 2008]

Product images:



Coomassie blue staining of purified CDC42EP1 protein (Cat# [TP303483]). The protein was produced from HEK293T cells transfected with CDC42EP1 cDNA clone (Cat# [RC203483]) using MegaTran 2.0 (Cat# [TT210002]).