

## Product datasheet for **TP303483L**

### CDC42EP1 (NM\_007061) Human Recombinant Protein

#### Product data:

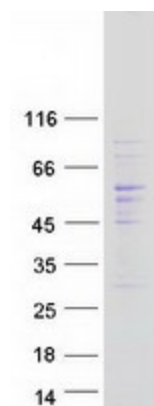
<b>Product Type:</b>	Recombinant Proteins
<b>Description:</b>	Recombinant protein of human CDC42 effector protein (Rho GTPase binding) 1 (CDC42EP1), transcript variant 2, 1 mg
<b>Species:</b>	Human
<b>Expression Host:</b>	HEK293T
<b>Expression cDNA Clone or AA Sequence:</b>	>RC203483 protein sequence <b>Red</b> =Cloning site <b>Green</b> =Tags(s)
	<p>MPGPQGGRGAATMSLGKLSVGVWSSSQGKRRLTADMISHPLGDFRHTMHVGRGGDVFGDTSFLSNHGGSSGSTHRSPRSFLAKKLQLVRRVGAPRRMASPPAPSPAPPAISPIIKNAISLPQLNQAAYDSLWVGKLSFDSSPTSSTDGHSYGLDSGFCTISRLPRSEKPHDRDRDGSFPSEPLRRSDSLLSFRDLDLGPSLLSEL LGVMSLPEAPAAETPAPAAANPPAPTANPTGPAANPPATTANPPAPAATPTGPAANPPAPAAASSTPHGHCP NGVTAGLGPVAEVKSSPVGGGPRGPAGPALGRHWGAGWDGGHHYPEDARQERVEVLPQARASWESLDEE WRAPQAGSRTPVPSTVQANTFEFADAEEDDEVKV</p> <p><b>TRTRPLEQKLISEEDLAANDILDYKDDDDKV</b></p>
<b>Tag:</b>	C-Myc/DDK
<b>Predicted MW:</b>	39.5 kDa
<b>Concentration:</b>	>0.05 µg/µL as determined by microplate BCA method
<b>Purity:</b>	> 80% as determined by SDS-PAGE and Coomassie blue staining
<b>Buffer:</b>	25 mM Tris-HCl, 100 mM glycine, pH 7.3, 10% glycerol
<b>Preparation:</b>	Recombinant protein was captured through anti-DDK affinity column followed by conventional chromatography steps.
<b>Note:</b>	For testing in cell culture applications, please filter before use. Note that you may experience some loss of protein during the filtration process.
<b>Storage:</b>	Store at -80°C.
<b>Stability:</b>	Stable for 12 months from the date of receipt of the product under proper storage and handling conditions. Avoid repeated freeze-thaw cycles.
<b>RefSeq:</b>	<u><a href="#">NP_008992</a></u>



[View online »](#)

Locus ID:	11135
UniProt ID:	<a href="#">Q00587</a>
RefSeq Size:	2182
Cytogenetics:	22q13.1
RefSeq ORF:	1152
Synonyms:	55 kDa bone marrow stromal/endothelial cell protein; BORG5; CDC42 effector protein (Rho GTPase binding) 1; CDC42 effector protein 1; CEP1; CEP1, BORG5, MSE55, MGC15316; MGC15316; MSE55; OTTHUMP00000028709; serum constituent protein
Summary:	CDC42 is a member of the Rho GTPase family that regulates multiple cellular activities, including actin polymerization. The protein encoded by this gene is a CDC42 binding protein that mediates actin cytoskeleton reorganization at the plasma membrane. This protein is secreted and is primarily found in bone marrow. [provided by RefSeq, Jul 2008]

### Product images:



Coomassie blue staining of purified CDC42EP1 protein (Cat# [TP303483]). The protein was produced from HEK293T cells transfected with CDC42EP1 cDNA clone (Cat# [RC203483]) using MegaTran 2.0 (Cat# [TT210002]).