

Product datasheet for **TP303478L**

FHL1 (NM_001449) Human Recombinant Protein

Product data:

Product Type: Recombinant Proteins

Description: Recombinant protein of human four and a half LIM domains 1 (FHL1), 1 mg

Species: Human

Expression Host: HEK293T

Expression cDNA Clone or AA Sequence: >RC203478 representing NM_001449
Red=Cloning site **Green**=Tags(s)

MAEKFDCHYCRDPLQGKKYVQKDGHHCLKCFDKFCANTCVECRKPIGADSKEVHYKNRFWHDTCFRCAK
CLHPLANETFVAKDNKILCNKCTTREDSPKCKGCFKAIVAGDQNVYKGTVWHKDCFTCSNCKQVIGTGS
FFPKGEDFYCVTCHETKFAKHCVKCNKAITSGGITYQDQPWHADCFVCVTCSSKLAGQRFTAVEDQYYCV
DCYKNFVAKKAGCKNPITGFGKGSVVAYEGQSWHDYCFHCKKCSVNLANKRFVHQEQVYCPDCAKLL

TRTRPLEQKLISEEDLAANDILDYKDDDDKV

Tag: C-Myc/DDK

Predicted MW: 31.7 kDa

Concentration: >0.1 µg/µL as determined by microplate BCA method

Purity: > 80% as determined by SDS-PAGE and Coomassie blue staining

Buffer: 25 mM Tris-HCl, 100 mM glycine, pH 7.3, 10% glycerol

Bioactivity: Enzyme substrate (PMID: [26551678](#))

Preparation: Recombinant protein was captured through anti-DDK affinity column followed by conventional chromatography steps.

Note: For testing in cell culture applications, please filter before use. Note that you may experience some loss of protein during the filtration process.

Storage: Store at -80°C.

Stability: Stable for 12 months from the date of receipt of the product under proper storage and handling conditions. Avoid repeated freeze-thaw cycles.

RefSeq: [NP_001440](#)

Locus ID: 2273

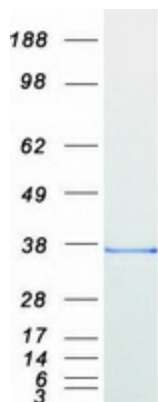


[View online »](#)

UniProt ID:	Q13642
RefSeq Size:	2398
Cytogenetics:	Xq26.3
RefSeq ORF:	840
Synonyms:	FCMSU; FHL-1; FHL1A; FHL1B; FLH1A; KYOT; RBMX1A; RBMX1B; SLIM; SLIM-1; SLIM1; SLIMMER; XMPMA

Summary: This gene encodes a member of the four-and-a-half-LIM-only protein family. Family members contain two highly conserved, tandemly arranged, zinc finger domains with four highly conserved cysteines binding a zinc atom in each zinc finger. Expression of these family members occurs in a cell- and tissue-specific mode and these proteins are involved in many cellular processes. Mutations in this gene have been found in patients with Emery-Dreifuss muscular dystrophy. Multiple alternately spliced transcript variants which encode different protein isoforms have been described.[provided by RefSeq, Nov 2009]

Product images:



Coomassie blue staining of purified FHL1 protein (Cat# [TP303478]). The protein was produced from HEK293T cells transfected with FHL1 cDNA clone (Cat# [RC203478]) using MegaTran 2.0 (Cat# [TT210002]).