

## Product datasheet for TP303471

### MAD1 (MAD1L1) (NM\_003550) Human Recombinant Protein

#### Product data:

Product Type:	Recombinant Proteins
Description:	Recombinant protein of human MAD1 mitotic arrest deficient-like 1 (yeast) (MAD1L1), transcript variant 1, 20 µg
Species:	Human
Expression Host:	HEK293T
Expression cDNA Clone or AA Sequence:	>RC203471 protein sequence <b>Red</b> =Cloning site <b>Green</b> =Tags(s)

MEDLGENTMVLSTLRSLNMFISQRVEGGSGLDISTSAPGSLQMYYQQSMQLEERAEQIRSKSHLIQVERE  
KMQMELSHKRARVELERAASTSARNYEREVDNRQELLTRIRQLQEREAGAEKMQEQLERNRQCQQNLD  
A  
ASKRLREKEDSLAQAGETINALKGRISELQWSVMDQEMRVKRESEKQELQEQLDLQHKKCQEANQKIQE  
LQASQEARADHEQQIKDLEQKLSLQEQDAAIVKNMKSELVRLPRLERELKQLREESAHLREMRETNGLLQ  
EELEGLQRKLGRQEKMQETLVGLELENERLLAKLQSWERLDQTMGLSIRTPEDLSRFVVELQQRELAKD  
KNSAVTSSARGLEKARQQQLQEELRQVSGQLLEERKKRETHEALARRLQKRVLLLTKERDGMRAILGYSYS  
ELTPAEYSPQLTRRMREAEDMVQKVHSHSAEMEAQLSQALEELGGQKQRADMLEMELKMLKSQSSSAE  
QS  
FLFSREEADTLRLKVEELEGERSRLEEEKRMLEAQLERRALQGDYDQSRTKVLHMSLNPTSVARQRLRED  
HSQLQAECERLRGLLRAMERGGTVPADLEAAAASLPSSKEVAELKKQVESAEKLNQRLKEVFQTKIQEFR  
KACYTLTGQIDITTENQYRLTSLYAEHPGDCLIFKATSPSGSKMQLLETFSHTVGEIEVHLRRQDSI  
PAFLSSLTLELFSRQTVA

**TRTRPLEQKLISEEDLAANDILDYKDDDDKV**

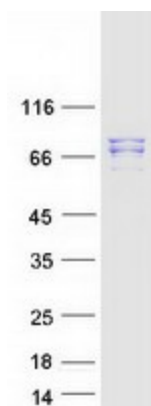
Tag:	C-Myc/DDK
Predicted MW:	82.9 kDa
Concentration:	>0.05 µg/µL as determined by microplate BCA method
Purity:	> 80% as determined by SDS-PAGE and Coomassie blue staining
Buffer:	25 mM Tris-HCl, 100 mM glycine, pH 7.3, 10% glycerol
Preparation:	Recombinant protein was captured through anti-DDK affinity column followed by conventional chromatography steps.



[View online »](#)

<b>Note:</b>	For testing in cell culture applications, please filter before use. Note that you may experience some loss of protein during the filtration process.
<b>Storage:</b>	Store at -80°C.
<b>Stability:</b>	Stable for 12 months from the date of receipt of the product under proper storage and handling conditions. Avoid repeated freeze-thaw cycles.
<b>RefSeq:</b>	<a href="#">NP_003541</a>
<b>Locus ID:</b>	8379
<b>UniProt ID:</b>	<a href="#">Q9Y6D9</a>
<b>RefSeq Size:</b>	2754
<b>Cytogenetics:</b>	7p22.3
<b>RefSeq ORF:</b>	2154
<b>Synonyms:</b>	MAD1; PIG9; TP53I9; TXBP181
<b>Summary:</b>	MAD1L1 is a component of the mitotic spindle-assembly checkpoint that prevents the onset of anaphase until all chromosome are properly aligned at the metaphase plate. MAD1L1 functions as a homodimer and interacts with MAD2L1. MAD1L1 may play a role in cell cycle control and tumor suppression. Alternative splicing results in multiple transcript variants. [provided by RefSeq, Jan 2015]
<b>Protein Families:</b>	Druggable Genome
<b>Protein Pathways:</b>	Cell cycle

### Product images:



Coomassie blue staining of purified MAD1L1 protein (Cat# TP303471). The protein was produced from HEK293T cells transfected with MAD1L1 cDNA clone (Cat# [RC203471]) using MegaTran 2.0 (Cat# [TT210002]).