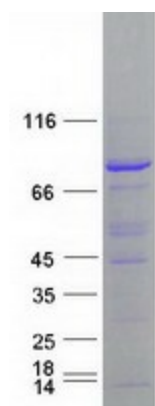




<b>Stability:</b>	Stable for 12 months from the date of receipt of the product under proper storage and handling conditions. Avoid repeated freeze-thaw cycles.
<b>RefSeq:</b>	<a href="#">NP_003580</a>
<b>Locus ID:</b>	8451
<b>UniProt ID:</b>	<a href="#">Q13619</a>
<b>RefSeq Size:</b>	3735
<b>Cytogenetics:</b>	13q34
<b>RefSeq ORF:</b>	2280
<b>Summary:</b>	CUL4A is the ubiquitin ligase component of a multimeric complex involved in the degradation of DNA damage-response proteins (Liu et al., 2009 [PubMed 19481525]).[supplied by OMIM, Oct 2009]
<b>Protein Pathways:</b>	Nucleotide excision repair, Ubiquitin mediated proteolysis

**Product images:**

Coomassie blue staining of purified CUL4A protein (Cat# [TP303463]). The protein was produced from HEK293T cells transfected with CUL4A cDNA clone (Cat# [RC203463]) using MegaTran 2.0 (Cat# [TT210002]).