

## Product datasheet for **TP303453L**

### Apg3 (ATG3) (NM\_022488) Human Recombinant Protein

#### Product data:

Product Type:	Recombinant Proteins
Description:	Recombinant protein of human ATG3 autophagy related 3 homolog ( <i>S. cerevisiae</i> ) (ATG3), 1 mg
Species:	Human
Expression Host:	HEK293T
Expression cDNA Clone or AA Sequence:	>RC203453 protein sequence <b>Red</b> =Cloning site <b>Green</b> =Tags(s)
	<p>MQNVINTVKGKALEVAEYLTPVLKESKFKETGVITPEEFVAAGDHLVHHCTWQWATGEELKVKAYLPTG KQFLVTKNVPCYKRCKQMEYSDELEAIIIEEDDGDGGWVDTYHNTGITGITEAVKEITLENKDNIRLQDCS ALCEEEDEDEGEAADMEEYEESGLLETDEATLDRKIVEACKAKTDAGGEDAILQTRTYDLYITYDKYY QTPRLWLFYDEQRQPLTVEHMYEDISQDHVKKTVTIENHPLPPPPMCSVHPCRHAHEVMKKIETVAEG GGELGVHMYLLIFLKFVQAVIPTIEYDYTRHFTM</p> <p><b>TRTRPLEQKLISEEDLAANDILDYKDDDDKV</b></p>
Tag:	C-Myc/DDK
Predicted MW:	35.7 kDa
Concentration:	>0.05 µg/µL as determined by microplate BCA method
Purity:	> 80% as determined by SDS-PAGE and Coomassie blue staining
Buffer:	25 mM Tris-HCl, 100 mM glycine, pH 7.3, 10% glycerol
Preparation:	Recombinant protein was captured through anti-DDK affinity column followed by conventional chromatography steps.
Note:	For testing in cell culture applications, please filter before use. Note that you may experience some loss of protein during the filtration process.
Storage:	Store at -80°C.
Stability:	Stable for 12 months from the date of receipt of the product under proper storage and handling conditions. Avoid repeated freeze-thaw cycles.
RefSeq:	<a href="#">NP_071933</a>
Locus ID:	64422



[View online »](#)

UniProt ID: [Q9NT62](#)

RefSeq Size: 1572

Cytogenetics: 3q13.2

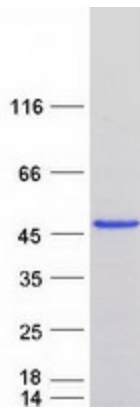
RefSeq ORF: 942

Synonyms: APG3; APG3-LIKE; APG3L; PC3-96

**Summary:** This gene encodes a ubiquitin-like-conjugating enzyme and is a component of ubiquitination-like systems involved in autophagy, the process of degradation, turnover and recycling of cytoplasmic constituents in eukaryotic cells. This protein is known to play a role in regulation of autophagy during cell death. A pseudogene of this gene is located on chromosome 20. Alternative splicing results in multiple transcript variants encoding different isoforms. [provided by RefSeq, Jul 2013]

**Protein Pathways:** Regulation of autophagy

### Product images:



Coomassie blue staining of purified ATG3 protein (Cat# [TP303453]). The protein was produced from HEK293T cells transfected with ATG3 cDNA clone (Cat# [RC203453]) using MegaTran 2.0 (Cat# [TT210002]).