

## Product datasheet for TP303449

### RMC1 (NM\_013326) Human Recombinant Protein

#### Product data:

Product Type:	Recombinant Proteins
Description:	Recombinant protein of human chromosome 18 open reading frame 8 (C18orf8), 20 µg
Species:	Human
Expression Host:	HEK293T
Expression cDNA Clone or AA Sequence:	>RC203449 protein sequence Red=Cloning site Green=Tags(s)

MGEEDYYLELCERPVQFEKANPVNCVFFDEANKQVFAVRSGGATGWVVKGPDDRNPISFRMDDKGEVKCI  
KFSLENKILAVQRTSKTVDFCNFIPDNSQLEYTQECKTKNANILGFCWTSSTEIVFITDQGIEFYQVLPE  
KRSLKLLKSHNLNVNWYMYCPESAVILLSTTVLENVLQPFHFRAGTMSKLPKFEIELPAAPKSTKPSLSE  
RDIAMATIYGQLYVFLRHHSRSTSNSTGAEVLYHLPREGACKMHILKNRTGKFALNVVDNLVWHHQ  
DTETSIVFDIKLRGEFDGSVTFHHPVLPARSIQPYQIPITGPAAVTSQSPVPCKLYSSSWIVFQPDIIIS  
ASQGYLWNLQVKLEPIVNLDPDKGRMLDFLLQRKECKMVLVSVCSQMLSESDRASLPVIATVFDKLNHEY  
KKYLDAEQSYAMAVEAGQSRSSPLLKRPVRTQAVLDQSDVYTHVLSAFVEKKEMPHKFVIAVLMVEYIRSL  
NQFQIAVQHYLHELVIKTLVQHNLFYMLHQFLQYHVLSDSKPLACLLLSLEFYPPAHQLSLDMLKRLST  
ANDEIVEVLLSKHQVLAALRFIRGIGGHDNISARKFLDAAKQTEDNMLFYTIFRFFEQRNQLRGGSPNFT  
PGEHCEEHVAFKQIFGDQALMRPTTF

TRTRPLEQKLISEEDLAANDILDYKDDDDKV

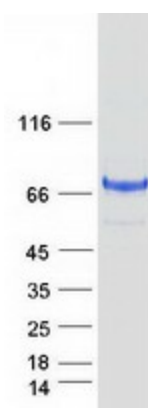
Tag:	C-Myc/DDK
Predicted MW:	74.8 kDa
Concentration:	>0.05 µg/µL as determined by microplate BCA method
Purity:	> 80% as determined by SDS-PAGE and Coomassie blue staining
Buffer:	25 mM Tris-HCl, 100 mM glycine, pH 7.3, 10% glycerol
Preparation:	Recombinant protein was captured through anti-DDK affinity column followed by conventional chromatography steps.
Note:	For testing in cell culture applications, please filter before use. Note that you may experience some loss of protein during the filtration process.
Storage:	Store at -80°C.



[View online »](#)

Stability:	Stable for 12 months from the date of receipt of the product under proper storage and handling conditions. Avoid repeated freeze-thaw cycles.
RefSeq:	<a href="#">NP_037458</a>
Locus ID:	29919
UniProt ID:	<a href="#">Q96DM3</a> , <a href="#">B7Z201</a>
RefSeq Size:	2226
Cytogenetics:	18q11.2
RefSeq ORF:	1971
Synonyms:	C18orf8; HsT2591; Mic-1; MIC1; WDR98
Summary:	This gene encodes a colon cancer associated protein. [provided by RefSeq, Jan 2013]

### Product images:



Coomassie blue staining of purified RMC1 protein (Cat# TP303449). The protein was produced from HEK293T cells transfected with RMC1 cDNA clone (Cat# [RC203449]) using MegaTran 2.0 (Cat# [TT210002]).